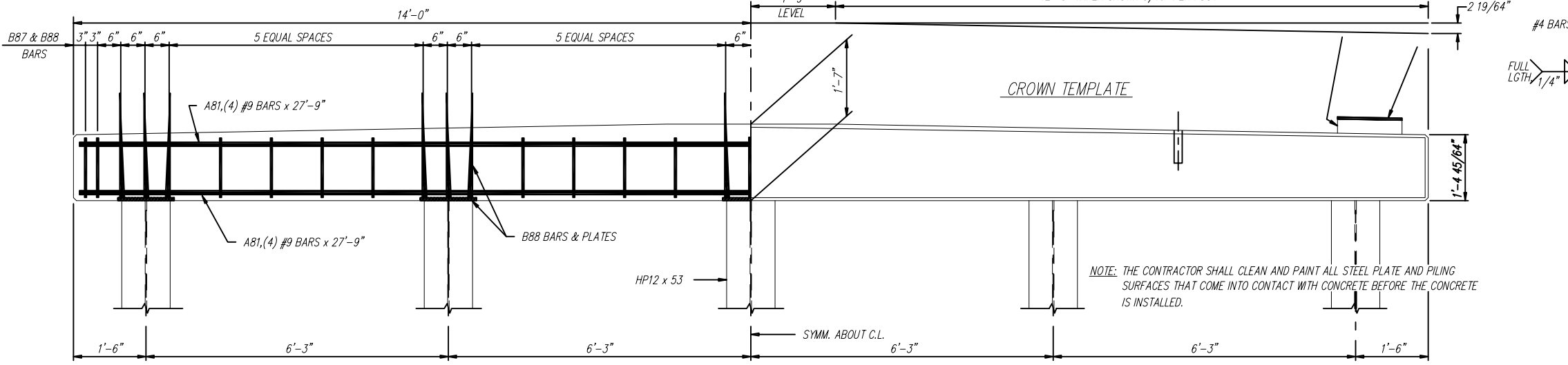
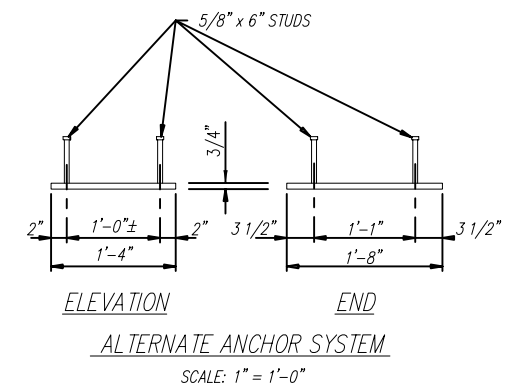


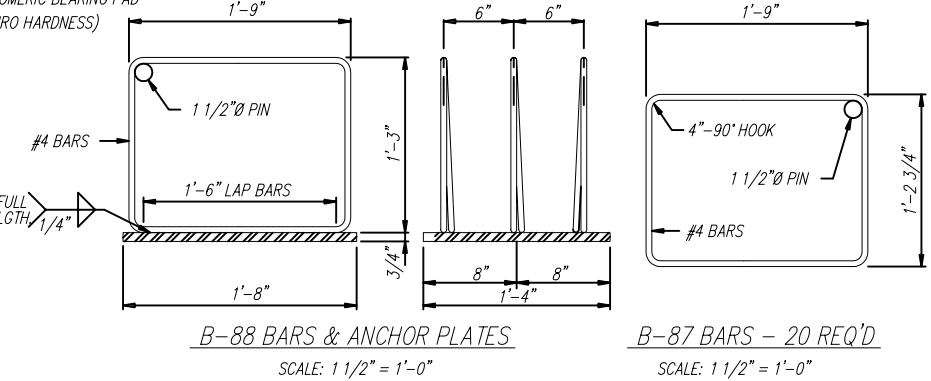
**\*\* DEPTH OF RISER BLOCK**

24' SPAN	NA
34' SPAN	4"
40' SPAN	7"



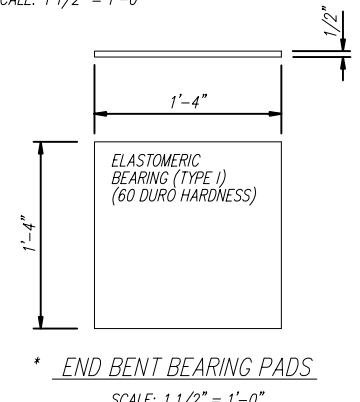
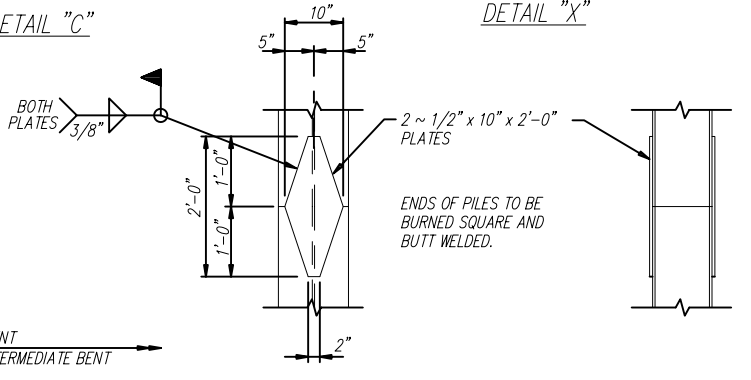
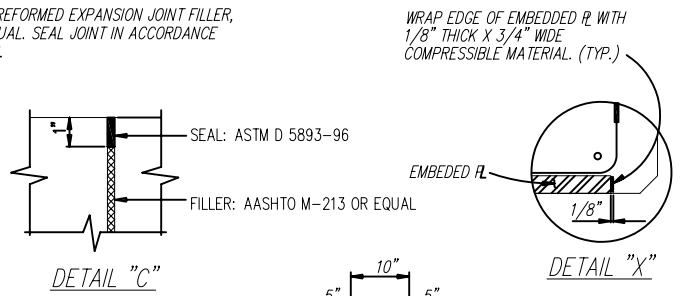
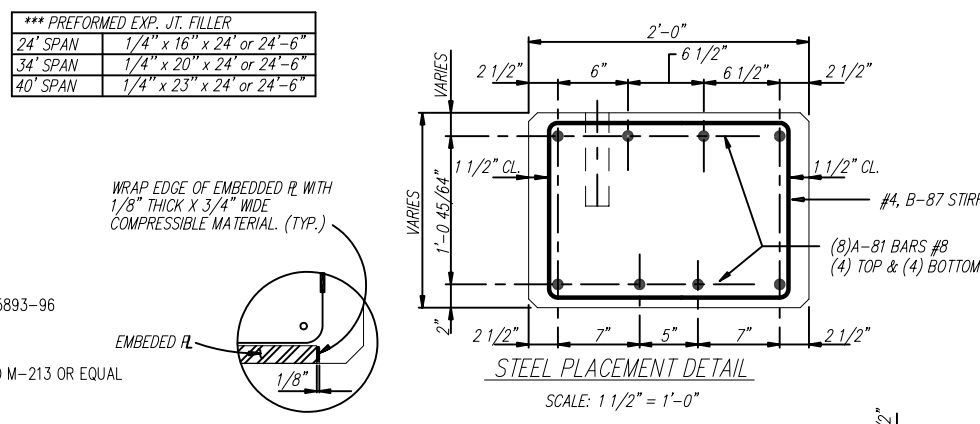
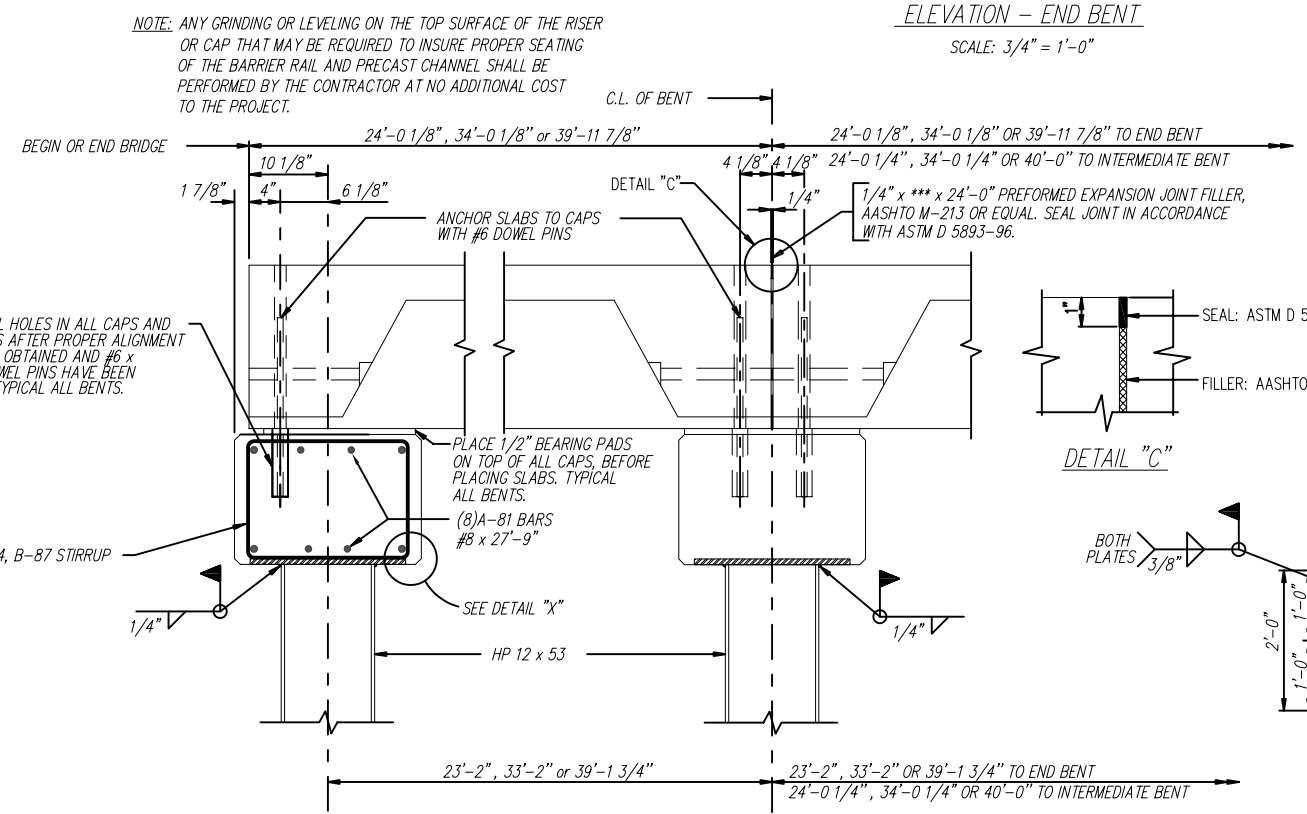
**\*\*\* PREFORMED EXP. JT. FILLER**

24' SPAN	1/4" x 16" x 24" or 24'-6"
34' SPAN	1/4" x 20" x 24" or 24'-6"
40' SPAN	1/4" x 23" x 24" or 24'-6"



**GENERAL NOTES:**

- SPECIFICATIONS:**  
 AASHTO STANDARD SPECIFICATIONS FOR HIGHWAY BRIDGES  
 AASHTO STANDARD SPECIFICATIONS FOR TRANSPORTATION MATERIALS  
 AMERICAN SOCIETY FOR TESTING AND MATERIALS  
 AMERICAN INSTITUTE OF STEEL CONSTRUCTION
- DESIGN LOADING:** A.A.S.H.T.O. HS 20-44
- CONCRETE:** CONCRETE SHALL CONFORM TO AASHTO CLASS A. MINIMUM 28 DAY COMPRESSIVE STRENGTH SHALL BE 3000 PSI. ALL EXPOSED CORNERS TO BE CHAMFERED 3/4" X 45' UNLESS OTHERWISE NOTED.
- REINFORCING STEEL:** ALL REINFORCING STEEL SHALL BE GRADE 60 BILLET STEEL MEETING THE REQUIREMENTS OF AASHTO M31 OR ASTM A615. ALL REINFORCING STEEL SHALL BE ACCURATELY LOCATED IN THE FORMS AND PROPER CLEARANCES MAINTAINED WITH STAINLESS STEEL OR RUBBER TIPPED CHAIRS. REINFORCING DIMENSIONS ARE CENTER TO CENTER UNLESS OTHERWISE NOTED ON PLANS.
- STRUCTURAL STEEL AND PILING:** ALL STRUCTURAL STEEL SHALL COMPLY WITH AASHTO M270 GRADE 36. ALL PILING SHALL BE 12" STEEL "H" PILING, 53 LBS PER FOOT. PILE DESIGN LOADING 24 TONS (HS20-44).
- WELDING:** ALL WELDING SHALL CONFORM TO ANS/AASHTO/ANS D 1.5 "BRIDGE WELDING CODE"
- TOLERANCES:** A DEVIATION OF MORE THAN 1/8" MAY BE CAUSE FOR REJECTION OF THE UNIT.
- DESIGN DATA:** AASHTO 1992 & INTERIM  $f_s = 24,000$  p.s.i.;  $f_c = 1,200$  p.s.i.;  $n = 10$
- BID ITEM:**  
 ELASTOMERIC BEARINGS TYPE I - PER EACH  
 PRECAST CONCRETE ABUTMENT CAPS, 2'-0" WIDE BY 1'-7" DEEP BY 28'-0" LONG - PER EACH.



**CONECUH BRIDGE & ENGINEERING, LLC**  
 P. O. Box 129  
 Troy, Alabama 36081  
 249 County Rd. 2227  
 Troy, Alabama 36079  
 334-566-7422

PRECAST CONCRETE END BENT CAP  
 FOR USE WITH STEEL PILING & 24', 34', OR 40'  
 PRECAST BRIDGE SLABS 24'-0" & 24'-6" CLEAR ROADWAY