

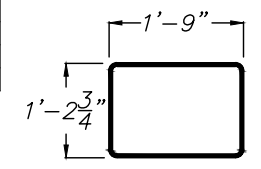
PLAN - INTERMEDIATE BENT

**** DEPTH OF RISER BLOCK**

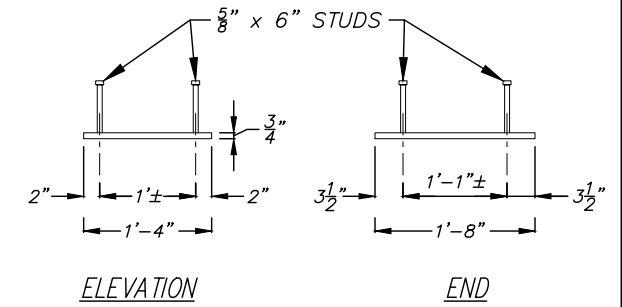
24' SPAN	NA
34' SPAN	4"
40' SPAN	7"

***** PREFORMED EXP. JT. FILLER**

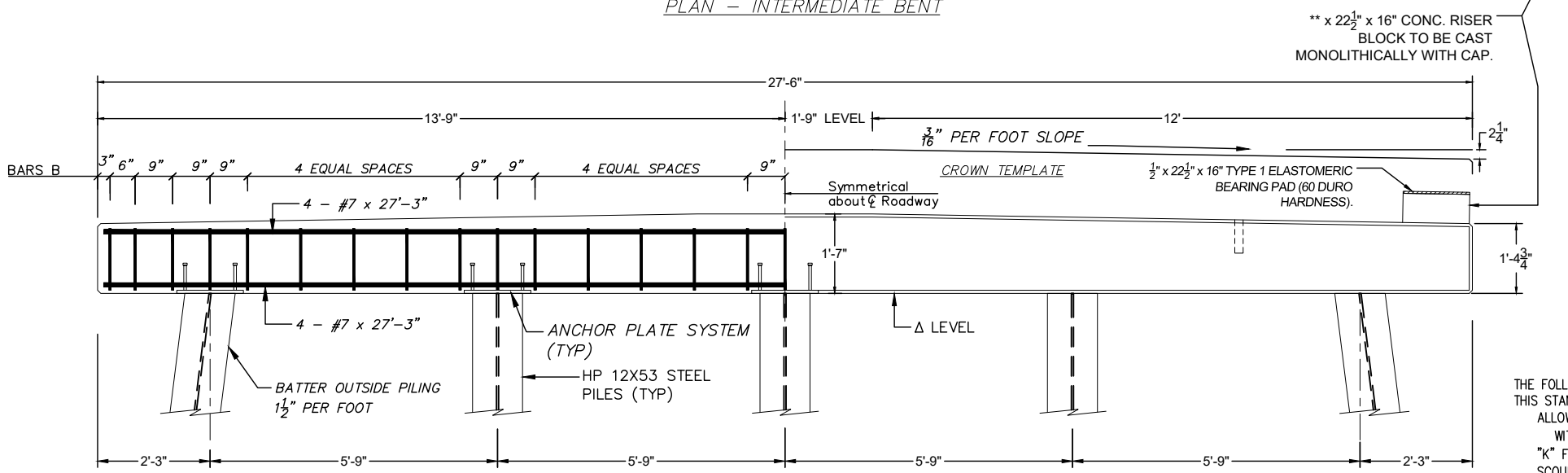
24' SPAN	1/4" x 16" x 24'-6"
34' SPAN	1/4" x 20" x 24'-6"
40' SPAN	1/4" x 23" x 24'-6"



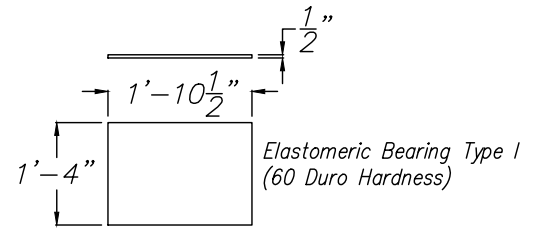
BARS B - #4 (35 per Cap)
BAR BENDING DETAILS
Dimensions Are Out To Out



ANCHOR SYSTEM



ELEVATION - INTERMEDIATE BENT



BEARING PADS

A 1/2" X 8" X 1'-10 1/2" Elastomeric Bearing, Type 1, Shall Be Used Under The Outside Legs Of The Exterior Channels.

DESIGN PARAMETERS
THE FOLLOWING DESIGN PARAMETERS WERE USED TO DEVELOP THIS STANDARD DRAWING:
ALLOWABLE PILE LOAD = 55 TONS/PILE
WITH A FACTOR OF SAFETY OF 2.0 (MIN.)
"K" FOR COMPUTING UNBRACED PILE LENGTH = 1.0
SCOUR DEPTH = NOT CALCULATED
DISTANCE FROM GROUND LINE TO PILE FULLY FIXED = 10 FEET
FACTOR OF SAFETY FOR UNSECURED CONDITION = 2.0
THE DESIGNER OF RECORD IS RESPONSIBLE FOR DETERMINING ACTUAL PILE SIZE AND BRACING REQUIREMENTS FOR CONDITIONS NOT SATISFIED BY THE ABOVE NOTED DESIGN PARAMETERS.

GENERAL NOTES:

SPECIFICATIONS:
AASHTO LRFD BRIDGE CONSTRUCTION SPECIFICATIONS
AASHTO STANDARD SPECIFICATIONS FOR TRANSPORTATION MATERIALS AND METHODS OF SAMPLING AND TESTING
AMERICAN SOCIETY FOR TESTING AND MATERIALS
AMERICAN INSTITUTE OF STEEL CONSTRUCTION

REINFORCING STEEL: ALL REINFORCING STEEL SHALL BE GRADE 60 BILLET STEEL MEETING THE REQUIREMENTS OF AASHTO M31. ALL REINFORCING STEEL SHALL BE ACCURATELY LOCATED IN THE FORMS AND PROPER CLEARANCES MAINTAINED WITH STAINLESS STEEL, PLASTIC, OR RUBBER TIPPED CHAIRS. REINFORCING DIMENSIONS ARE CENTER TO CENTER UNLESS OTHERWISE NOTED ON PLANS.

CONCRETE: CONCRETE SHALL CONFORM TO AASHTO CLASS A(AE). MINIMUM 28 DAY COMPRESSIVE STRENGTH SHALL BE 3000 PSL. ALL EXPOSED CORNERS TO BE CHAMFERED 3/4" X 45" UNLESS OTHERWISE NOTED.

STRUCTURAL STEEL AND PILING: ALL STRUCTURAL STEEL SHALL COMPLY WITH AASHTO M270 GRADE 36. ALL PILING SHALL BE 12" STEEL "H" PILING, 53 LBS PER FOOT. ALLOWABLE PILE LOAD = 55 TONS WITH A FACTOR OF SAFETY OF 2.0 (MIN.) (HL-93).

WELDING: ALL WELDING SHALL CONFORM TO ANSI/AASHTO/ANS D 1.5 "BRIDGE WELDING CODE"

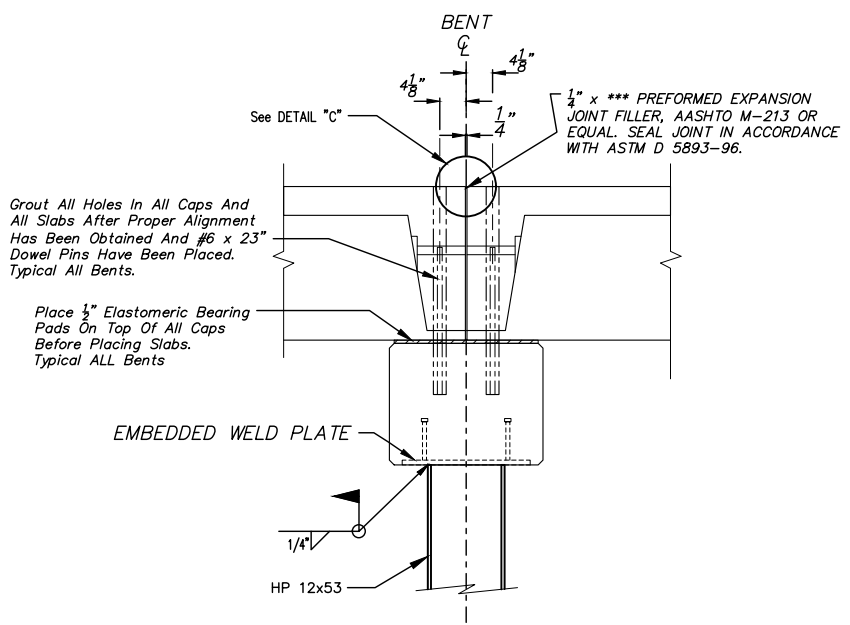
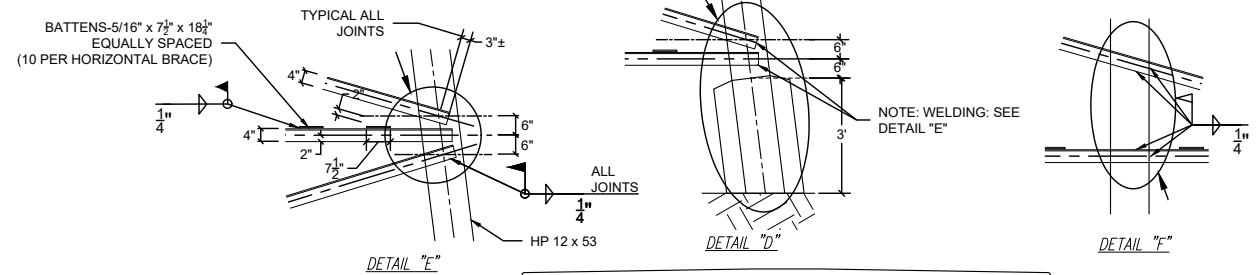
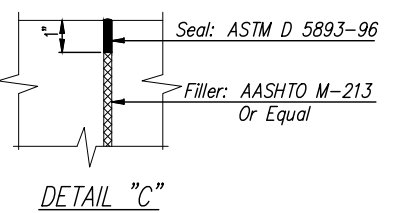
TOLERANCES: A DEVIATION OF MORE THAN 1/8" MAY BE CAUSE FOR REJECTION OF THE UNIT.

HARDWARE: ALL BOLTS SHALL CONFORM TO ASTM A-307 AND BE GALVANIZED IN ACCORDANCE WITH ASTM-A153

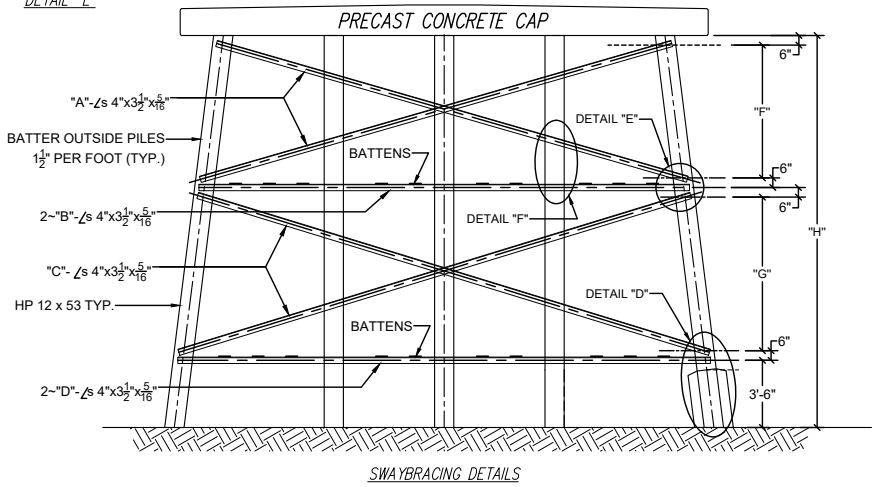
DESIGN DATA:
SPECIFICATIONS:.....AASHTO 2017, 8TH EDITION AND ALL INTERIMS
DESIGN LOADING:.....HL-93

SWAYBRACING TABLE

	"H"	"F"	"G"	"A"	"B"	"C"	"D"	WT. LBS
SINGLE STORY SWAYBRACING	11'-0"	6'-11"	---	25'-6"	25'-6"	---	---	906
	12'-0"	7'-11"	---	25'-11"	25'-9"	---	---	916
	13'-0"	8'-11"	---	26'-4"	26'-0"	---	---	927
	14'-0"	9'-11"	---	26'-10"	26'-3"	---	---	938
	15'-0"	10'-11"	---	27'-4"	26'-6"	---	---	949
	16'-0"	11'-11"	---	27'-10"	26'-9"	---	---	961
DOUBLE STORY SWAYBRACING	17'-0"	12'-11"	---	28'-5"	27'-0"	---	---	974
	18'-0"	6'-11"	5'-7"	25'-6"	25'-6"	27'-0"	27'-3"	1862
	19'-0"	6'-11"	6'-7"	25'-6"	25'-6"	27'-5"	27'-6"	1872
	20'-0"	6'-11"	7'-7"	25'-6"	25'-6"	27'-10"	27'-9"	1882
	21'-0"	6'-11"	8'-7"	25'-6"	25'-6"	28'-3"	28'-0"	1892
	22'-0"	6'-11"	9'-7"	25'-6"	25'-6"	28'-9"	28'-3"	1903
	23'-0"	6'-11"	10'-7"	25'-6"	25'-6"	29'-2"	28'-6"	1914

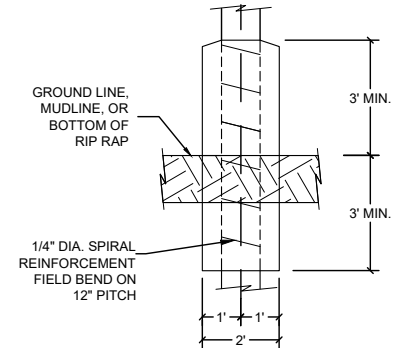


TYPICAL INTERMEDIATE SECTION



Two Story Bent Shown, Single Story Bents Similar. Swaybracing For Single Story Bents Shall Be 4" x 3 1/2" x 5/16" Angles & Designed By The Letters "A" & "B". All Piling @ Ground And/or Water Line Shall Be Encased In Concrete. Note Encasement Details.

NOTE: WHERE "H" IS LESS THAN 11', OMIT SWAYBRACING AND EXTEND THE ENCASEMENT TO THE BOTTOM OF THE CAP OR TO WITHIN 1' OF THE BOTTOM OF THE CAP. IF ENCASEMENT IS STOPPED SHORT OF THE BOTTOM OF THE CAP, THE STEEL PLATE AND STEEL PILE SHALL BE CLEANED AND PAINTED TO 12" BELOW THE TOP OF THE PILE ENCASEMENT.



PILE ENCASEMENT DETAILS

NOTE: A PRE-FABRICATED H-PILE SPLICER, SUCH AS APF HP-30000 CHAMPION SPLICER OR EQUAL, SHALL BE USED FOR SPLICING PILES.



457 St. Michael St.
Mobile, AL 36602
(251) 433-1611

Cowles, Murphy, Glover & ASSOCIATES
A Full Service Engineering Firm
PERFORMANCE RELIABILITY EXPERIENCE

11880 Cranston Dr.
Suite 102
Arlington, TN 38002
(901) 290-5444

CONECUH BRIDGE & ENGINEERING, INC
P. O. Box 129
Troy, Alabama 36081
334-566-7422

249 Pike County Lake Rd.
Troy, Alabama 36079

PRECAST CONCRETE BENT CAP
FOR USE WITH STEEL PILING & 24', 34', OR 40'
PRECAST BRIDGE SLABS 24'-6" CLEAR ROADWAY

DATE: 12/05/2022
STANDARD DWG. NO. PCB-2440 LRFD
SHEET NO. 15 OF 27