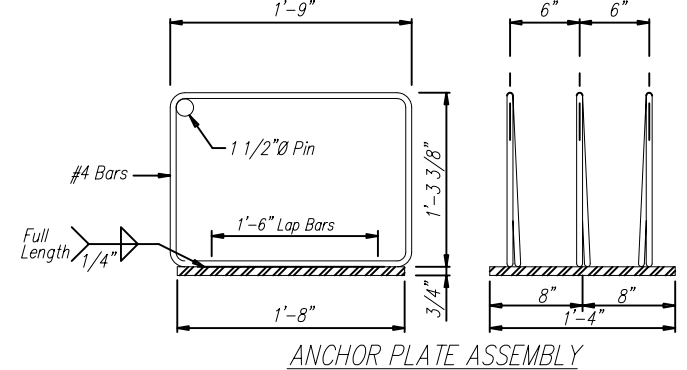


ALTERNATE ANCHOR ASSEMBLY
 NOTE: Where Alternate Anchor Plate Assembly Is Used, 3 Bars B Spaced 4 1/2" Required At Each Pile.



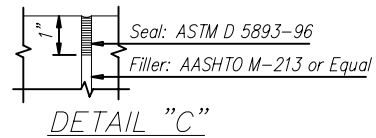
**** DEPTH OF RISER BLOCK**

24' SPAN	NA
34' SPAN	4"
40' SPAN	7"

** x 20 1/2" x 16" Concrete Riser Block To Be Cast Monolithically With Cap.

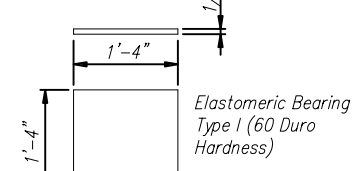
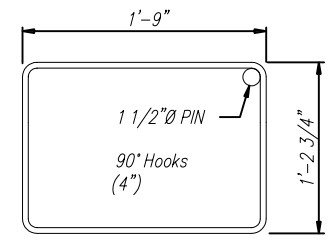
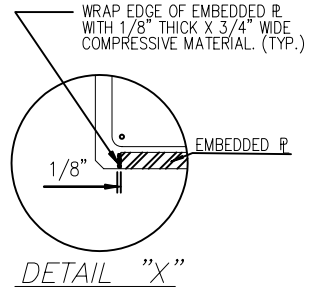
GENERAL NOTES:

- SPECIFICATIONS:**
 AASHTO STANDARD SPECIFICATIONS FOR HIGHWAY BRIDGES
 AASHTO STANDARD SPECIFICATIONS FOR TRANSPORTATION MATERIALS
 AMERICAN SOCIETY FOR TESTING AND MATERIALS
 AMERICAN INSTITUTE OF STEEL CONSTRUCTION
- DESIGN LOADING:** A.A.S.H.T.O. HS 20-44
- CONCRETE:** CONCRETE SHALL CONFORM TO AASHTO CLASS A. MINIMUM 28 DAY COMPRESSIVE STRENGTH SHALL BE 3000 PSI. ALL EXPOSED CORNERS TO BE CHAMFERED 3/4" X 45° UNLESS OTHERWISE NOTED.
- REINFORCING STEEL:** ALL REINFORCING STEEL SHALL BE GRADE 60 BILLET STEEL MEETING THE REQUIREMENTS OF AASHTO M31 OR ASTM A615. ALL REINFORCING STEEL SHALL BE ACCURATELY LOCATED IN THE FORMS AND PROPER CLEARANCES MAINTAINED WITH STAINLESS STEEL OR RUBBER TIPPED CHAIRS. REINFORCING DIMENSIONS ARE CENTER TO CENTER UNLESS OTHERWISE NOTED ON PLANS.
- STRUCTURAL STEEL AND PILING:** ALL STRUCTURAL STEEL SHALL COMPLY WITH AASHTO M270 GRADE 36. ALL PILING SHALL BE 12" STEEL "H" PILING, 53 LBS PER FOOT. PILE DESIGN LOADING 28 TONS (HS20-44).
- WELDING:** ALL WELDING SHALL CONFORM TO ANSI/AASHTO/ANS D 1.5 "BRIDGE WELDING CODE"
- TOLERANCES:** A DEVIATION OF MORE THAN 1/8" MAY BE CAUSE FOR REJECTION OF THE UNIT.
- DESIGN DATA:** AASHTO 1992 & INTERIM $f_s = 24,000$ p.s.i.; $f_c = 1,200$ p.s.i.; $n = 10$
- BID ITEM:**
 ELASTOMERIC BEARINGS TYPE I - PER EACH
 PRECAST CONCRETE ABUTMENT CAPS, 2'-0" WIDE BY 1'-8" DEEP BY 33'-0" LONG - PER EACH.

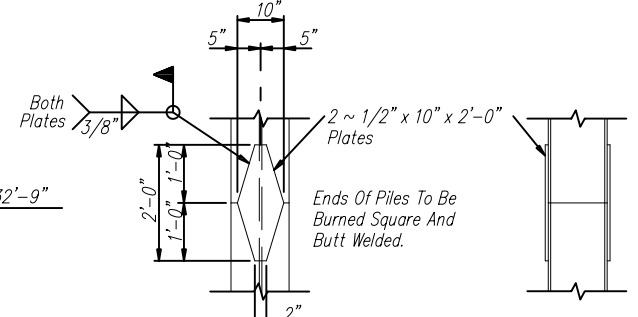
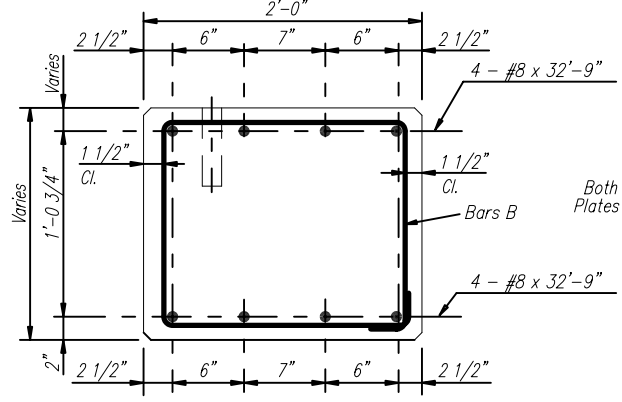
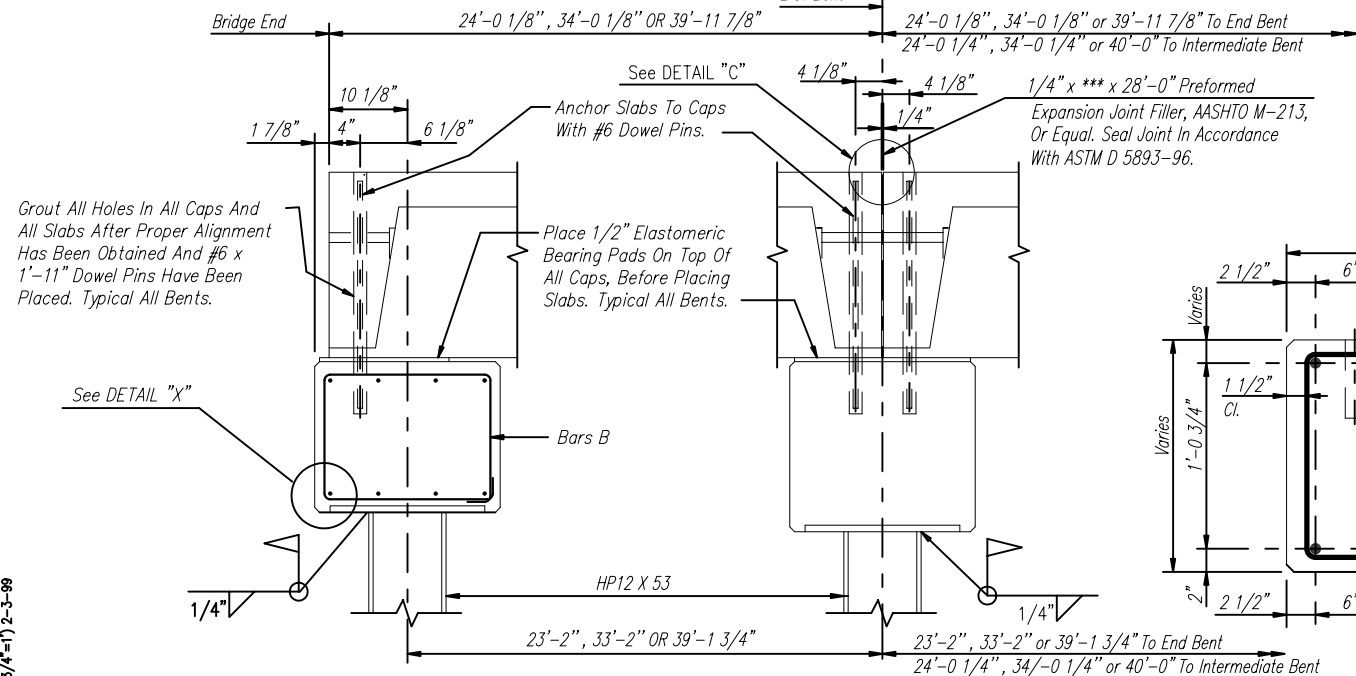


***** PREFORMED EXP. JT. FILLER**

24' SPAN	1/4" x 16" x 28"
34' SPAN	1/4" x 20" x 28"
40' SPAN	1/4" x 23" x 28"



* END BENT BEARING PADS
 * A 1/2" X 8" X 1'-4" Elastomeric Bearing, Type 1 Shall Be Used Under The Outside Leg Of The Exterior Channels.



TYPICAL END SECTION

TYPICAL INTERMEDIATE SECTION

STEEL PLACEMENT DETAIL

PILE SPLICE DETAIL

CONECUH BRIDGE & ENGINEERING, LLC
 P. O. Box 129 Troy, Alabama 36081
 249 County Rd. 2227 Troy, Alabama 36079
 334-566-7422

PRECAST CONCRETE END BENT CAP
 FOR USE WITH STEEL PILING & 24', 34', OR 40'
 PRECAST BRIDGE SLABS 28'-0" CLEAR ROADWAY

DATE: 7/24/03
 STANDARD DWG. NO. PCA-2840
 SHEET NO. 1 OF 1