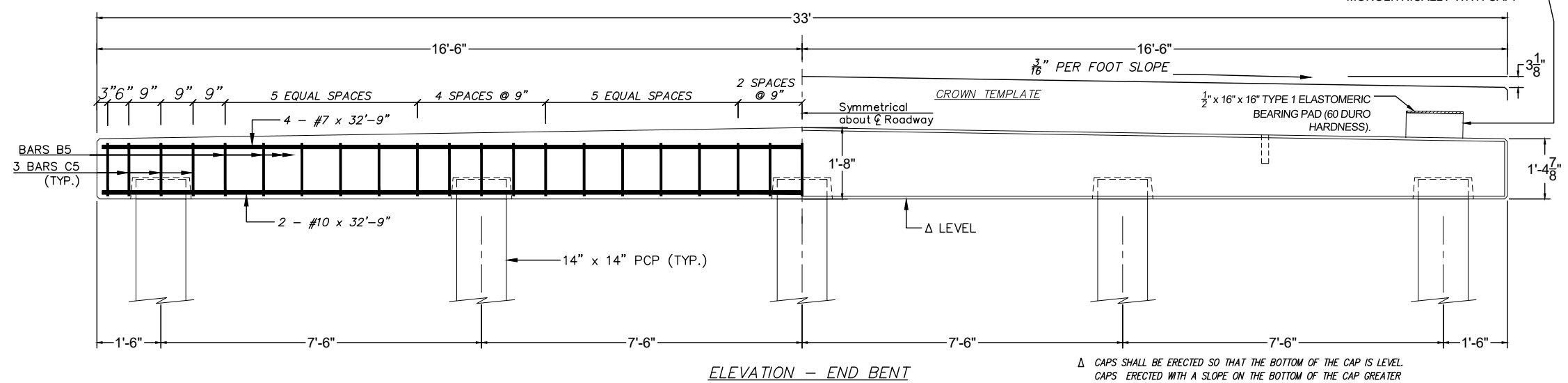
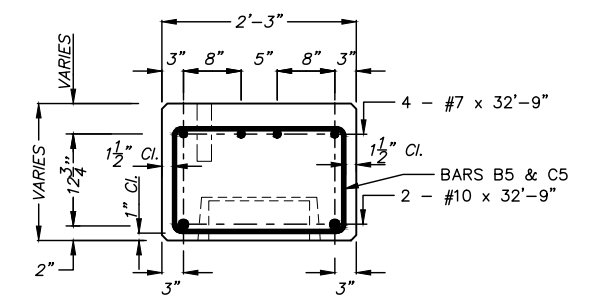


** DEPTH OF RISER BLOCK	
24' SPAN	NA
34' SPAN	4"
40' SPAN	7"

*** PREFORMED EXP. JT. FILLER	
24' SPAN	1/4" x 16" x 28'-0"
34' SPAN	1/4" x 20" x 28'-0"
40' SPAN	1/4" x 23" x 28'-0"



GENERAL NOTES:

SPECIFICATIONS:
 AASHTO LRFD BRIDGE CONSTRUCTION SPECIFICATIONS
 AASHTO STANDARD SPECIFICATIONS FOR TRANSPORTATION MATERIALS AND METHODS OF SAMPLING AND TESTING
 AMERICAN SOCIETY FOR TESTING AND MATERIALS
 AMERICAN INSTITUTE OF STEEL CONSTRUCTION

REINFORCING STEEL: ALL REINFORCING STEEL SHALL BE GRADE 60 BILLET STEEL MEETING THE REQUIREMENTS OF AASHTO M31. ALL REINFORCING STEEL SHALL BE ACCURATELY LOCATED IN THE FORMS AND PROPER CLEARANCES MAINTAINED WITH STAINLESS STEEL, PLASTIC, OR RUBBER TIPPED CHAIRS. REINFORCING DIMENSIONS ARE CENTER TO CENTER UNLESS OTHERWISE NOTED ON PLANS.

CONCRETE: CONCRETE SHALL CONFORM TO AASHTO CLASS A(AE). MINIMUM 28 DAY COMPRESSIVE STRENGTH SHALL BE 3000 PSI. ALL EXPOSED CORNERS TO BE CHAMFERED 3/4" X 45' UNLESS OTHERWISE NOTED.

PILING: ALL PILING SHALL BE 14"x14" PRESTRESSED CONCRETE PILE. ALLOWABLE PILE LOAD = 40 TONS WITH A FACTOR OF SAFETY OF 2.0 (MIN.) (HL-93).

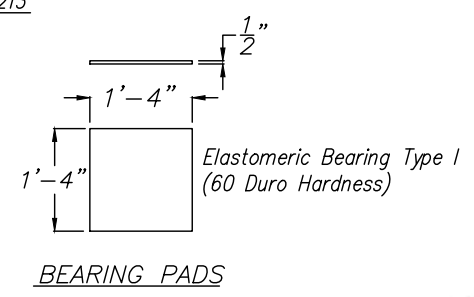
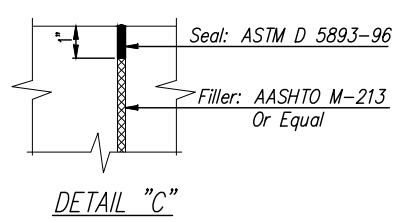
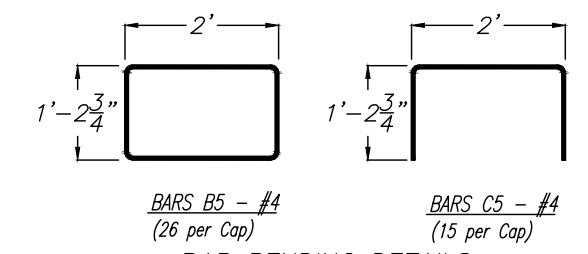
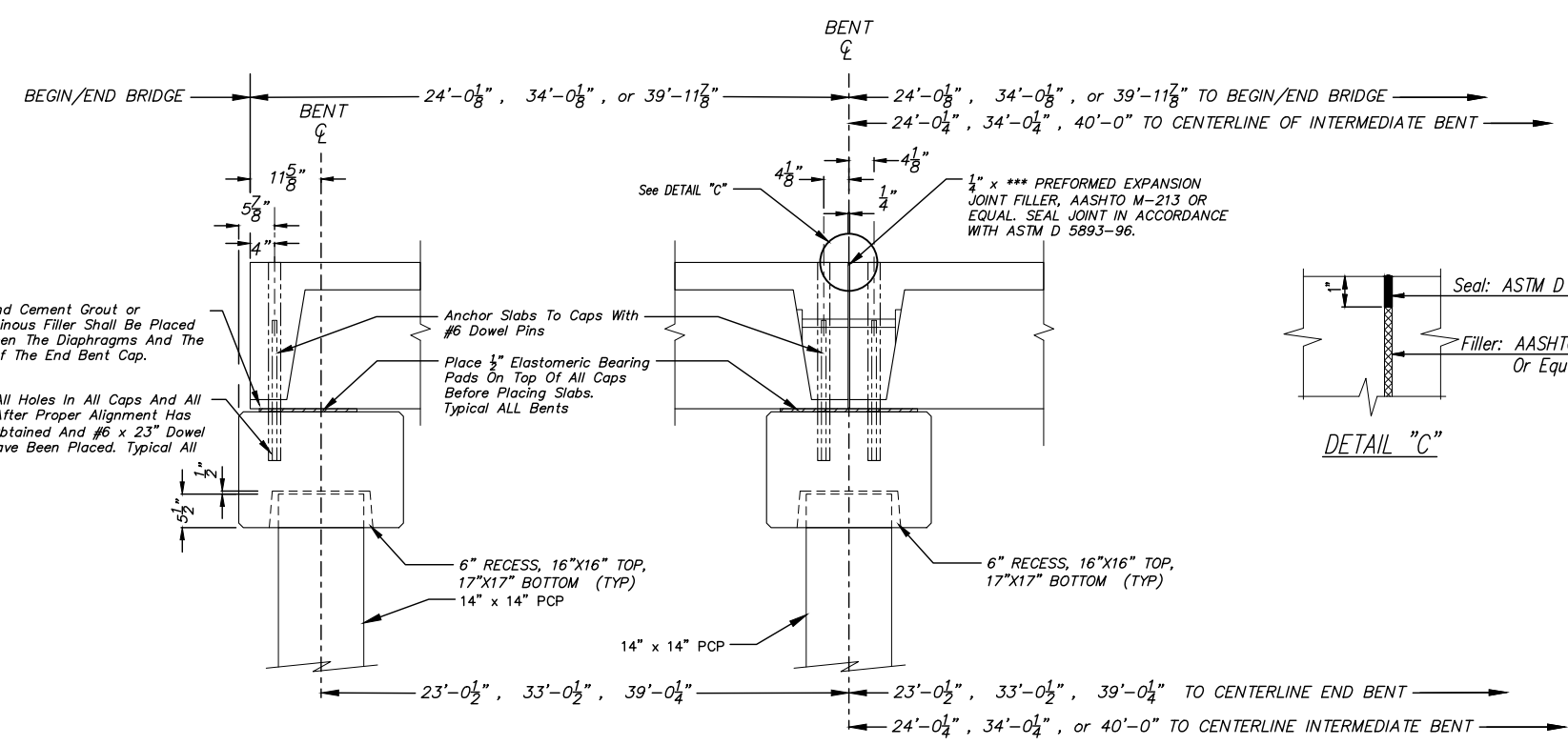
EPOXY GROUT: EPOXY GROUT SHALL DEVELOP A COMPRESSIVE STRENGTH OF 5000 PSI IN TWELVE (12) HOURS.

TOLERANCES: A DEVIATION OF MORE THAN 1/8" MAY BE CAUSE FOR REJECTION OF THE UNIT.

HARDWARE: ALL BOLTS SHALL CONFORM TO ASTM A-307 AND BE GALVANIZED IN ACCORDANCE WITH ASTM-A153

DESIGN DATA:
 SPECIFICATIONS:.....AASHTO 2017, 8TH EDITION AND ALL INTERIMS
 DESIGN LOADING:.....HL-93

Δ CAPS SHALL BE ERECTED SO THAT THE BOTTOM OF THE CAP IS LEVEL. CAPS ERECTED WITH A SLOPE ON THE BOTTOM OF THE CAP GREATER THAN 1/16" PER FOOT SHALL BE CORRECTED TO THE SATISFACTION OF THE ENGINEER OF RECORD AT NO ADDITIONAL COST TO THE PROJECT.



A Sand Cement Grout or Bituminous Filler Shall Be Placed Between The Diaphragms And The Top Of The End Bent Cap.
 Grout All Holes In All Caps And All Slabs After Proper Alignment Has Been Obtained And #6 x 23" Dowel Pins Have Been Placed. Typical All Bents.

Anchor Slabs To Caps With #6 Dowel Pins
 Place 1/2" Elastomeric Bearing Pads On Top Of All Caps Before Placing Slabs.
 Typical ALL Bents

457 St. Michael St.
 Mobile, AL 36602
 (251) 433-1611

Cowles, Murphy, Glover & ASSOCIATES
 A Full Service Engineering Firm
 PERFORMANCE RELIABILITY EXPERIENCE

11880 Cranston Dr.
 Suite 102
 Arlington, TN 38002
 (901) 290-5444

CONECUH BRIDGE & ENGINEERING, INC
 P. O. Box 129
 Troy, Alabama 36081
 249 Pike County Lake Rd.
 Troy, Alabama 36079
 334-566-7422

PRECAST CONCRETE END BENT CAP FOR USE WITH 14"x14" CONCRETE PILING & 24', 34', OR 40' PRECAST BRIDGE SLABS 28'-0" CLEAR ROADWAY

DATE: 12/05/2022
 STANDARD DWG. NO. PCA-2840-CP LRFD
 SHEET NO. 13 OF 27

