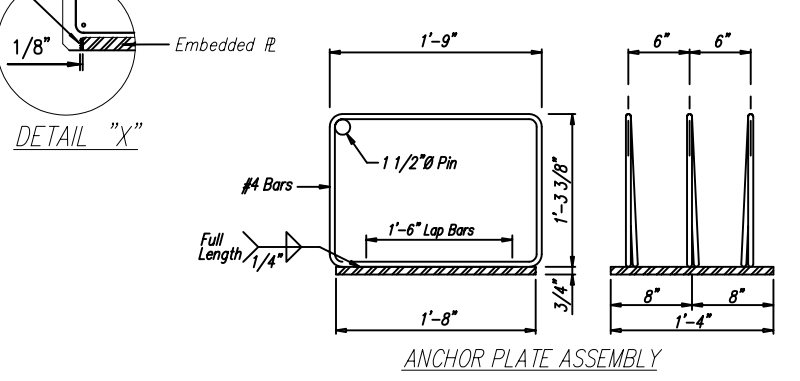
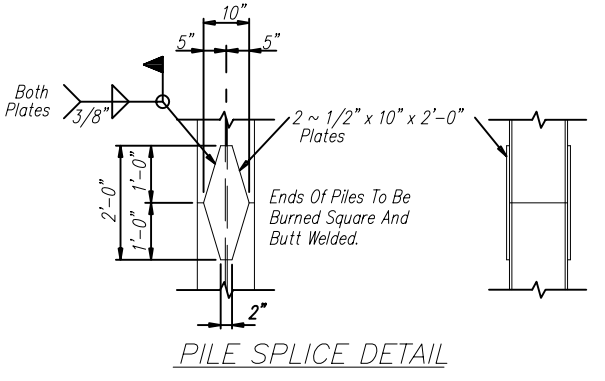
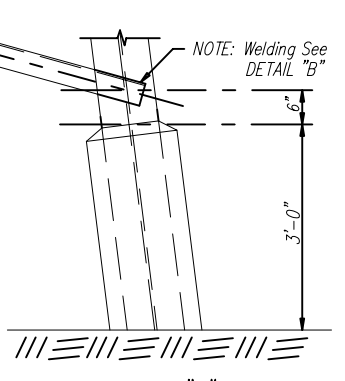
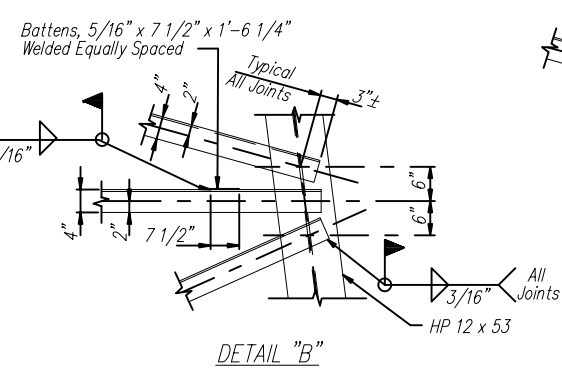
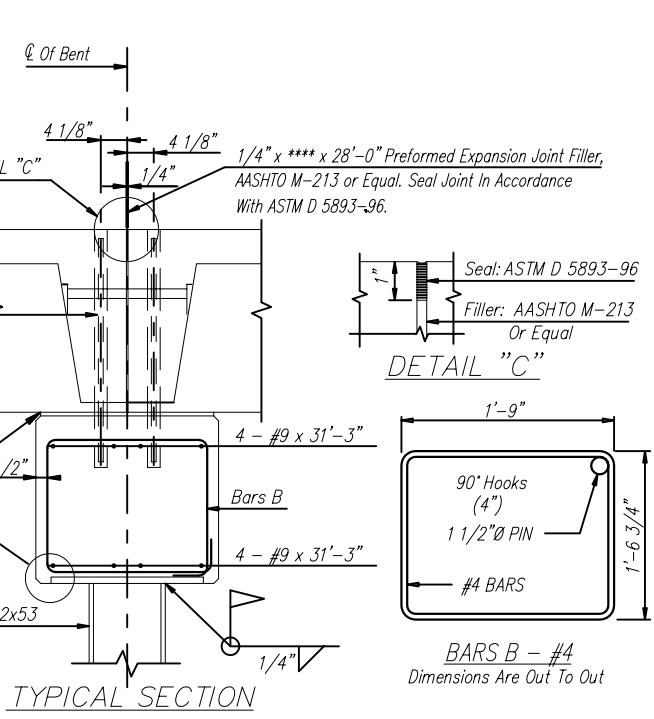


**** PREFORMED EXP. JT. FILLER	
24' SPAN	1/4" x 16" x 28"
34' SPAN	1/4" x 20" x 28"
40' SPAN	1/4" x 23" x 28"



**GENERAL NOTES:**

**SPECIFICATIONS:**  
AASHTO STANDARD SPECIFICATIONS FOR HIGHWAY BRIDGES  
AASHTO STANDARD SPECIFICATIONS FOR TRANSPORTATION MATERIALS  
AMERICAN SOCIETY FOR TESTING AND MATERIALS  
AMERICAN INSTITUTE OF STEEL CONSTRUCTION

**DESIGN LOADING:** A.A.S.H.T.O. HS 20-44

**CONCRETE:** CONCRETE SHALL CONFORM TO AASHTO CLASS A. MINIMUM 28 DAY COMPRESSIVE STRENGTH SHALL BE 3000 PSI. ALL EXPOSED CORNERS TO BE CHAMFERED 3/4" X 45° UNLESS OTHERWISE NOTED.

**REINFORCING STEEL:** ALL REINFORCING STEEL SHALL BE GRADE 60 BILLET STEEL MEETING THE REQUIREMENTS OF AASHTO M31 OR ASTM A615. ALL REINFORCING STEEL SHALL BE ACCURATELY LOCATED IN THE FORMS AND PROPER CLEARANCES MAINTAINED WITH STAINLESS STEEL OR RUBBER TIPPED CHAIRS. REINFORCING DIMENSIONS ARE CENTER TO CENTER UNLESS OTHERWISE NOTED ON PLANS.

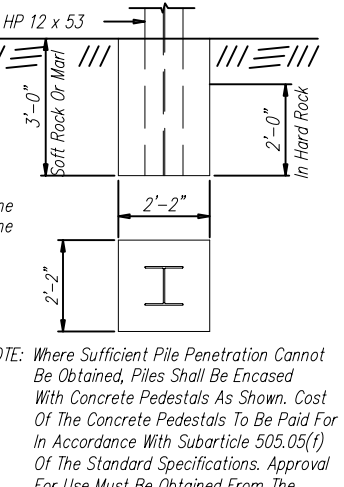
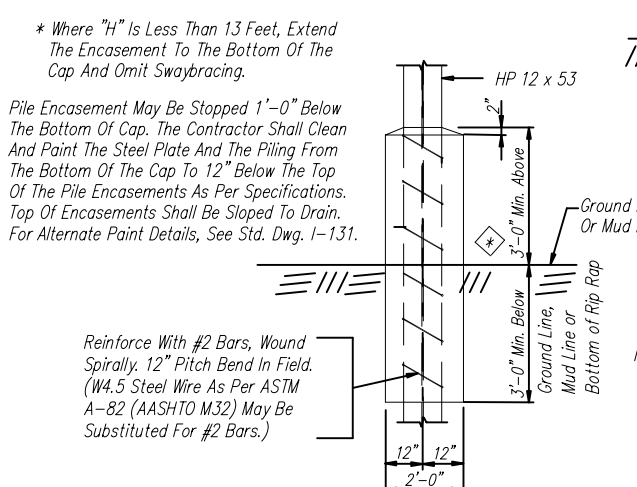
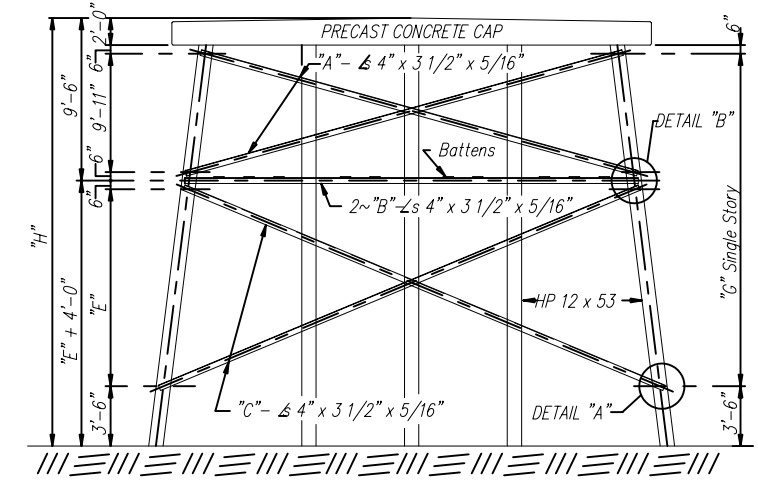
**STRUCTURAL STEEL AND PILING:** ALL STRUCTURAL STEEL SHALL COMPLY WITH AASHTO M270 GRADE 36. ALL PILING SHALL BE 12" STEEL "H" PILING, 53 LBS PER FOOT. PILE DESIGN LOADING 40 TONS (HS20-44).

**WELDING:** ALL WELDING SHALL CONFORM TO ANSI/AASHTO/ANS D 1.5 "BRIDGE WELDING CODE"

**TOLERANCES:** A DEVIATION OF MORE THAN 1/8" MAY BE CAUSE FOR REJECTION OF THE UNIT.

**DESIGN DATA:** AASHTO 1992 & INTERIM fs = 24,000 p.s.i.; fc = 1,200 p.s.i.; n = 10

**BID ITEM:**  
ELASTOMERIC BEARINGS TYPE I - PER EACH  
PRECAST CONCRETE INTERMEDIATE CAPS, 2'-0" WIDE BY 2'-0" DEEP BY 31'-6" LONG - PER EACH.



**TWO STORY BENT SWAYBRACING TABLES**

"H"	"E"	"A"	"B"	"C"	WT. LBS.
20'-0"	6'-1"	29'-10"	30'-0"	31'-6"	1407
21'-0"	7'-1"	29'-10"	30'-0"	31'-10"	1412
22'-0"	8'-1"	29'-10"	30'-0"	32'-2"	1417
23'-0"	9'-1"	29'-10"	30'-0"	32'-7"	1423
24'-0"	10'-1"	29'-10"	30'-0"	33'-0"	1430
25'-0"	11'-1"	29'-10"	30'-0"	33'-5"	1436

Batten Weight To Be Added To Above Tables. 10-Battens Req'd, 5/16" X 7 1/2" X 1'-6 1/4" @ 12.1# Each.

**SINGLE STORY BENT SWAYBRACING TABLES**

"H"	"G"	"D"	WT. LBS.
13'-0"	7'-0"	29'-10"	459
14'-0"	8'-0"	30'-3"	466
15'-0"	9'-0"	30'-8"	472
16'-0"	10'-0"	31'-1"	478
17'-0"	11'-0"	31'-6"	485
18'-0"	12'-0"	32'-0"	493
19'-0"	13'-0"	32'-6"	501

NOTE: Weight Given Is Total For Two Pieces Of Each. Length Of Swaybracing Shown In Both Tables.

**CONECUH BRIDGE & ENGINEERING, LLC**

P. O. Box 129  
Troy, Alabama 36081

249 County Rd. 2227  
Troy, Alabama 36079

334-566-7422

**PRECAST CONCRETE BENT CAP FOR USE WITH STEEL PILING AND 24', 34' OR 40' PRECAST CONCRETE BRIDGE SLABS -- 28 FT. CLEAR ROADWAY**

DATE: 7/24/03

STANDARD DWG. NO. PCB-2840

SHEET NO. 1 OF 1