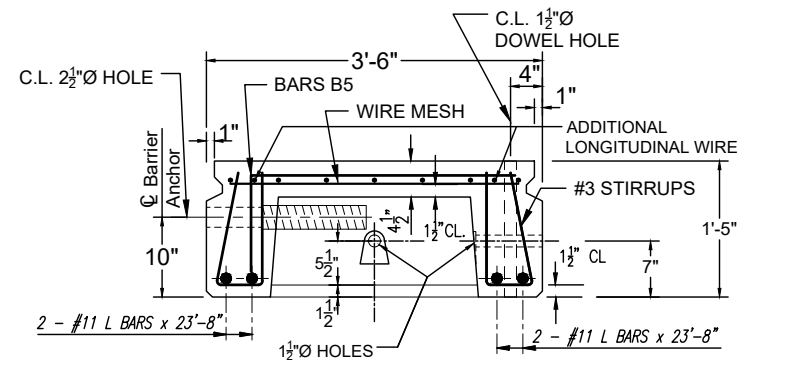
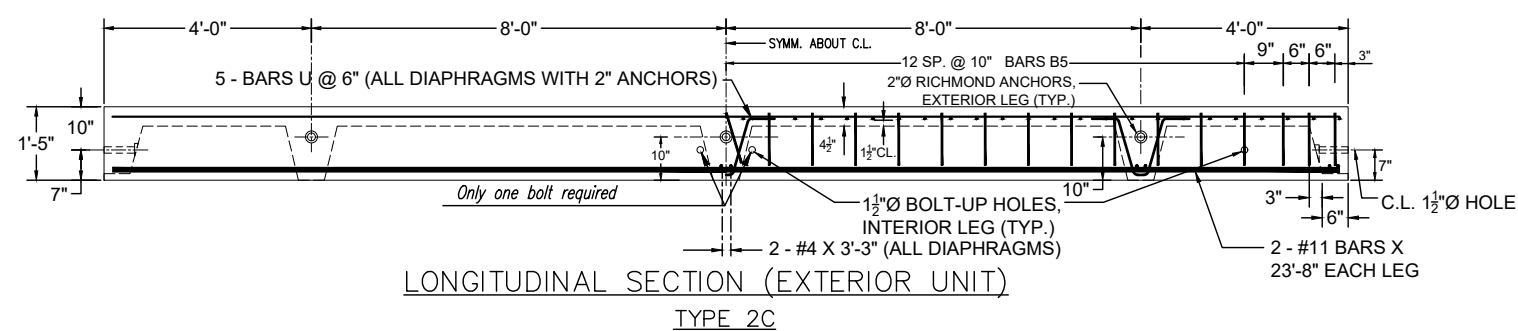
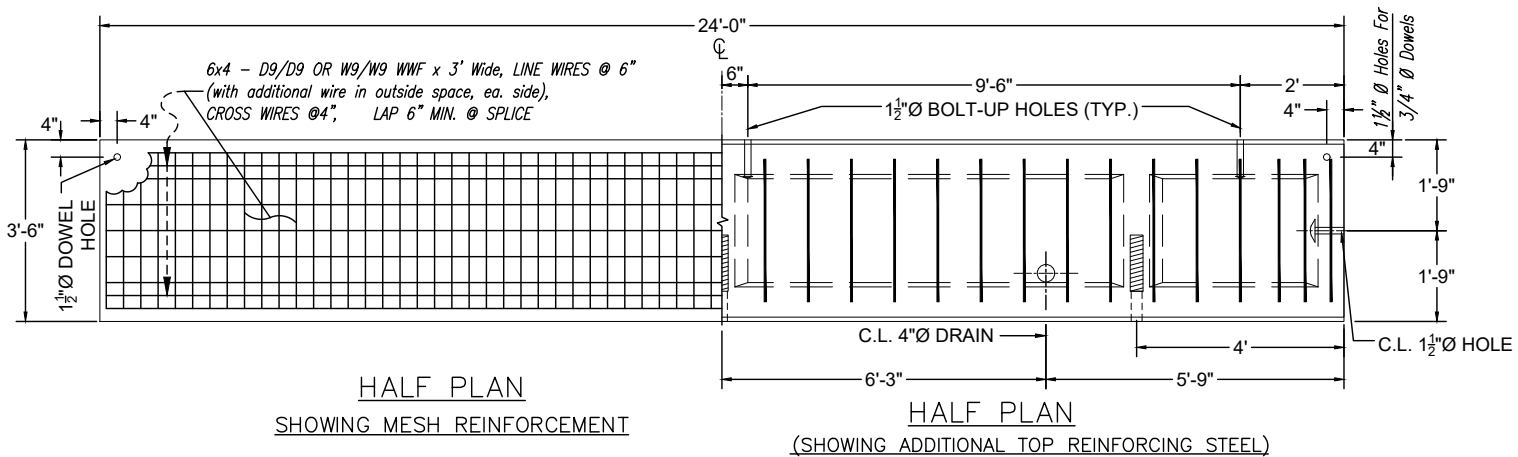
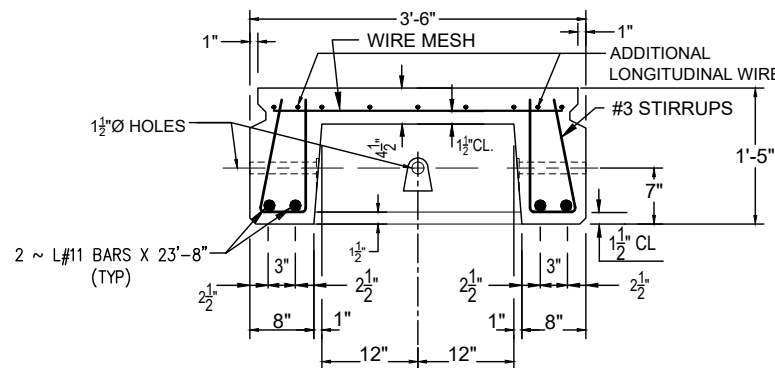


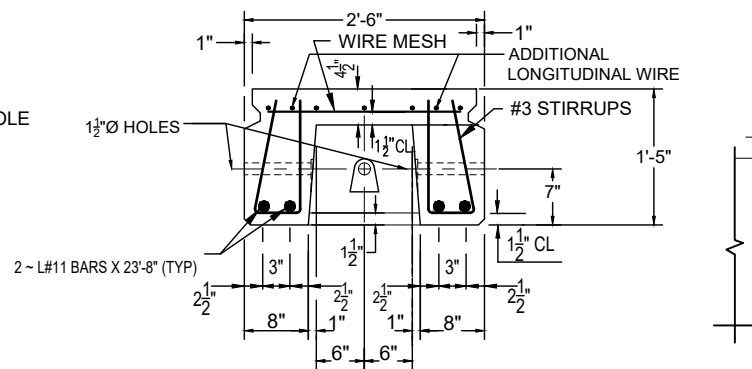
NOTE: STIRRUP LAYOUT IS THE SAME IN INTERIOR AND EXTERIOR UNITS



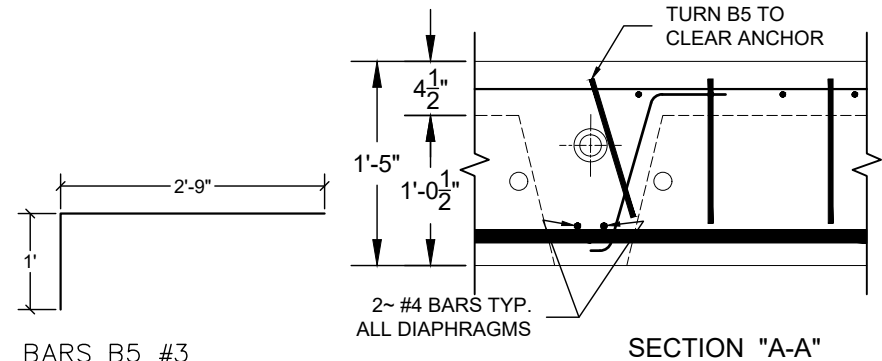
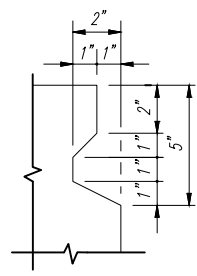
Bars U NOT SHOWN
SEE BR CONNECTION DETAIL



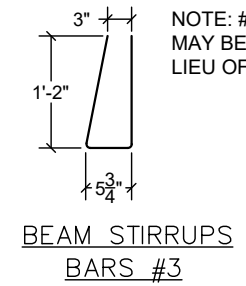
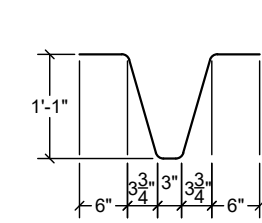
INTERIOR TYPE 1 SECTION



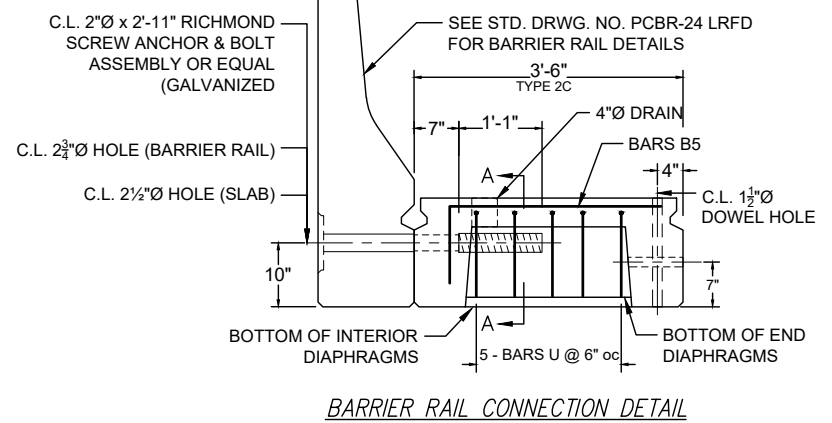
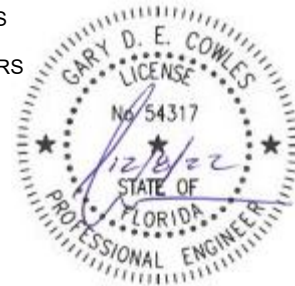
INTERIOR TYPE 1 SECTION



BARS B5 #3



NOTE: #4 REBARS MAY BE USED IN LIEU OF #3 REBARS



NOTE: SCREW ANCHOR ASSEMBLY DESIGN LOAD = 50 KIPS TENSION. PROPERLY INSTALLED SCREW ANCHOR ASSEMBLY HAS BEEN TESTED BY AN INDEPENDENT LAB TO TWICE THE DESIGN LOAD (100 KIPS). CERTIFIED TEST RESULTS AVAILABLE UPON REQUEST.

GENERAL NOTES:

SPECIFICATIONS:
AASHTO LRFD BRIDGE CONSTRUCTION SPECIFICATIONS
AASHTO STANDARD SPECIFICATIONS FOR TRANSPORTATION MATERIALS AND METHODS OF SAMPLING AND TESTING
AMERICAN SOCIETY FOR TESTING AND MATERIALS
AMERICAN INSTITUTE OF STEEL CONSTRUCTION

REINFORCING STEEL: ALL REINFORCING STEEL SHALL BE GRADE 60 BILLET STEEL MEETING THE REQUIREMENTS OF AASHTO M31. ALL REINFORCING STEEL SHALL BE ACCURATELY LOCATED IN THE FORMS AND PROPER CLEARANCES MAINTAINED WITH STAINLESS STEEL, PLASTIC, OR RUBBER TIPPED CHAIRS. REINFORCING DIMENSIONS ARE CENTER TO CENTER UNLESS OTHERWISE NOTED ON PLANS.

WELDED WIRE FABRIC: SHALL CONFORM TO THE REQUIREMENTS OF AASHTO M55 OR AASHTO M221. WIRE MESH SHALL BE A MINIMUM OF 70 GRADE STEEL.

EXPANSION JOINTS: JOINT FILLER TO BE AASHTO M-213 OR EQUAL.

CONCRETE: CONCRETE SHALL CONFORM TO AASHTO CLASS A(AE). MINIMUM 28 DAY COMPRESSIVE STRENGTH SHALL BE 5000 PSI.

HARDWARE: ALL BOLTS SHALL CONFORM TO ASTM A-307 AND BE GALVANIZED IN ACCORDANCE WITH ASTM-A153

DESIGN DATA:
SPECIFICATIONS:.....AASHTO 2017, 8TH EDITION AND ALL INTERIMS
DESIGN LOADING:.....HL-93

457 St. Michael St.
Mobile, AL 36602
(251) 433-1611

Cowles, Murphy, Glover & ASSOCIATES
A Full Service Engineering Firm
PERFORMANCE RELIABILITY EXPERIENCE

11880 Cranston Dr.
Suite 102
Arlington, TN 38002
(901) 290-5444

CONECUH BRIDGE & ENGINEERING, INC
P. O. Box 129
Troy, Alabama 36081
334-566-7422

249 Pike County Lake Rd.
Troy, Alabama 36079

PRECAST CONCRETE BRIDGE SLABS - 24' SPANS
HL-93 LOADING

DATE: 12/05/2022

STANDARD DWG. NO. PC-24 LRFD
SHEET NO. 1 OF 27