

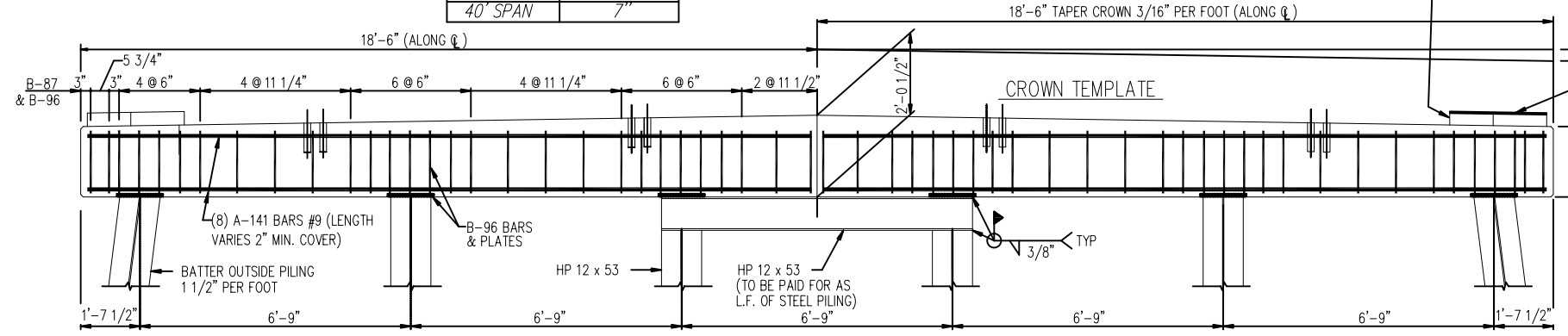
NOTE: THIS CAP MAY BE CAST AS A ONE PIECE CAP.

**** DEPTH OF RISER BLOCK**

32' SPAN	4"
40' SPAN	7"

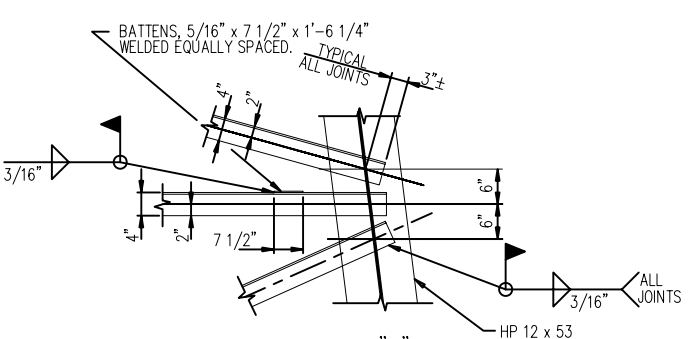
PLAN SPLIT INTERMEDIATE BENT
SCALE: 1/2" = 1'-0"

** x 26" x 16" CONCRETE RISER BLOCK TO BE CAST MONOLITHICALLY WITH CAP

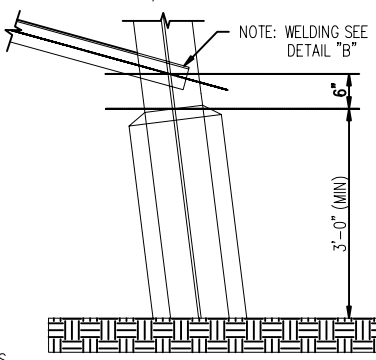


NOTE: ANY GRINDING OR LEVELING ON THE TOP SURFACE OF THE RISER THAT MAY BE REQUIRED TO INSURE PROPER SEATING OF THE BARRIER RAIL AND PRECAST CHANNEL SHALL BE PERFORMED BY THE CONTRACTOR AT NO ADDITIONAL COST TO THE PROJECT.

ELEVATION - INTERMEDIATE BENT
SCALE: 1/2" = 1'-0"



DETAIL "B"
SCALE: 3/4" = 1'-0"



DETAIL "A"
SCALE: 3/4" = 1'-0"

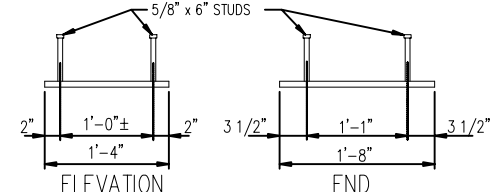
WHERE PILE BENT IS LOCATED IN WATER, ENCASMENT SHALL EXTEND 3'-0" MIN. ABOVE NORMAL WATER LINE AS DETERMINED BY ENGINEER.

* WHERE "H" IS LESS THAN 13 FEET, EXTEND THE ENCASMENT TO THE BOTTOM OF THE CAP AND OMIT SWAYBRACING.

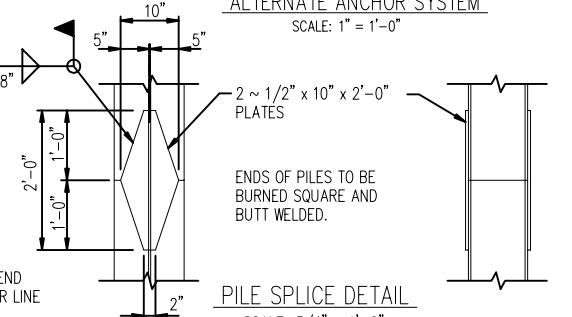
REINFORCE WITH #2 BARS, WOUND SPIRALLY. 12" PITCH BEND IN FIELD. (W4.5 STEEL WIRE AS PER ASTM A-82 (AASHTO M32) MAY BE SUBSTITUTED FOR #2 BARS.)

1'-6" SQUARE PILE ENCASMENTS MAY BE USED IN LIEU OF 24" ROUND ENCASMENTS. PAY QUANTITIES BASED ON ROUND ENCASMENTS.

PILE ENCASMENT DETAILS
SCALE: 1/2" = 1'-0"



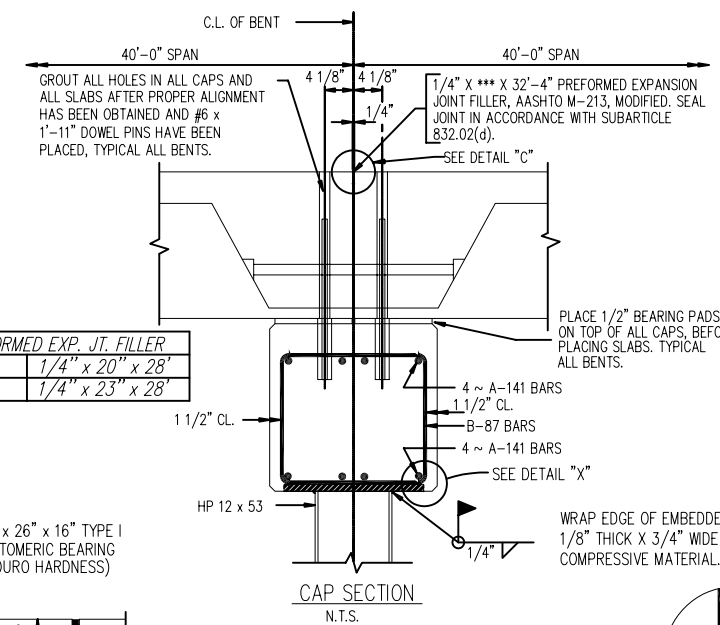
ALTERNATE ANCHOR SYSTEM
SCALE: 1" = 1'-0"



PILE SPLICE DETAIL
SCALE: 3/4" = 1'-0"

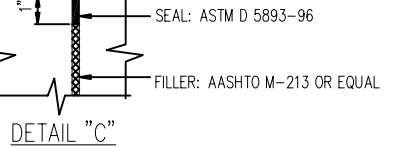
NOTE: WHERE SUFFICIENT PILE PENETRATION CANNOT BE OBTAINED, PILES SHALL BE ENCASED WITH CONCRETE PEDESTALS AS SHOWN. COST OF THE CONCRETE PEDESTALS TO BE PAID FOR IN ACCORDANCE WITH SUBARTICLE 505.05(1) OF THE STANDARD SPECIFICATIONS. APPROVAL FOR USE MUST BE OBTAINED FROM THE BUREAU OF CONSTRUCTION.

DETAILS FOR PILING ON CONCRETE PEDESTAL FOUNDATION
SCALE: 1/2" = 1'-0"

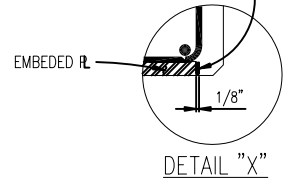


***** PREFORMED EXP. JT. FILLER**

32' SPAN	1/4" x 20" x 28"
40' SPAN	1/4" x 23" x 28"



DETAIL "C"



DETAIL "X"

NOTE: LEFT AHEAD BRIDGE AS SHOWN
RIGHT AHEAD BRIDGE OPP. HAND

GENERAL NOTES:

SPECIFICATIONS:
AASHTO STANDARD SPECIFICATIONS FOR HIGHWAY BRIDGES
AASHTO STANDARD SPECIFICATIONS FOR TRANSPORTATION MATERIALS
AMERICAN SOCIETY FOR TESTING AND MATERIALS
AMERICAN INSTITUTE OF STEEL CONSTRUCTION

DESIGN LOADING: A.A.S.H.T.O. HS 20-44

CONCRETE: CONCRETE SHALL CONFORM TO AASHTO CLASS A. MINIMUM 28 DAY COMPRESSIVE STRENGTH SHALL BE 3000 PSI. ALL EXPOSED CORNERS TO BE CHAMFERED 3/4" X 45° UNLESS OTHERWISE NOTED.

REINFORCING STEEL: ALL REINFORCING STEEL SHALL BE GRADE 60 BILLET STEEL MEETING THE REQUIREMENTS OF AASHTO M31 OR ASTM A615. ALL REINFORCING STEEL SHALL BE ACCURATELY LOCATED IN THE FORMS AND PROPER CLEARANCES MAINTAINED WITH STAINLESS STEEL OR RUBBER TIPPED CHAIRS. REINFORCING DIMENSIONS ARE CENTER TO CENTER UNLESS OTHERWISE NOTED ON PLANS.

STRUCTURAL STEEL AND PILING: ALL STRUCTURAL STEEL SHALL COMPLY WITH AASHTO M270 GRADE 36. ALL PILING SHALL BE 12" STEEL "H" PILING, 53 LBS PER FOOT. PILE DESIGN LOADING 40 TONS (HS20-44).

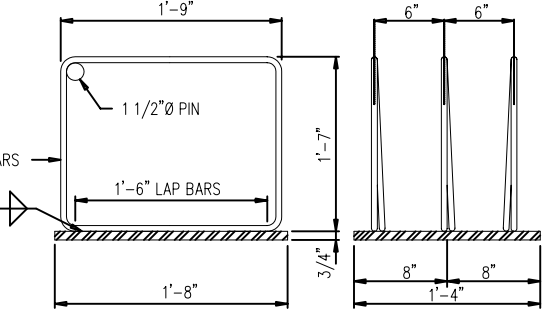
WELDING: ALL WELDING SHALL CONFORM TO ANSI/AASHTO/ANS D 1.5 "BRIDGE WELDING CODE"

TOLERANCES: A DEVIATION OF MORE THAN 1/8" MAY BE CAUSE FOR REJECTION OF THE UNIT.

DESIGN DATA: AASHTO 1992 & INTERIM $f_s = 24,000$ p.s.i.; $f_c = 1,200$ p.s.i.; $n = 10$

BID ITEM: ELASTOMERIC BEARINGS TYPE I - PER EACH

PRECAST CONCRETE ABUTMENT CAPS, 2'-0" WIDE BY 2'-0 1/2" DEEP BY 37'-0" LONG - PER EACH.



B-96 BARS & ANCHOR PLATES
SCALE: 1 1/2" = 1'-0"

TWO STORY BENT SWAYBRACING TABLES

"H"	"E"	"A"	"B"	"C"	WT. LBS.
20'-0"	6'-1"	36'-0"	36'-3"	37'-5"	1689
21'-0"	7'-1"	36'-0"	36'-3"	37'-11"	1697
22'-0"	8'-1"	36'-0"	36'-3"	38'-3"	1702
23'-0"	9'-1"	36'-0"	36'-3"	38'-7"	1707
24'-0"	10'-1"	36'-0"	36'-3"	39'-0"	1713
25'-0"	11'-1"	36'-0"	36'-3"	39'-4"	1718

BATTEN WEIGHT TO BE ADDED TO ABOVE TABLES. 15-BATTENS REQUIRED, 5/16" X 7 1/2" X 1'-6 1/4" @ 12.1# EACH.

NOTE: WEIGHT GIVEN IS TOTAL FOR TWO PIECES OF EACH LENGTH OF SWAYBRACING SHOWN IN BOTH TABLES.

SINGLE STORY BENT SWAYBRACING TABLES

"H"	"G"	"D"	WT. LBS.
13'-0"	7'-0"	35'-11"	553
14'-0"	8'-0"	36'-3"	558
15'-0"	9'-0"	36'-8"	565
16'-0"	10'-0"	37'-0"	570
17'-0"	11'-0"	37'-5"	576
18'-0"	12'-0"	37'-10"	583
19'-0"	13'-0"	38'-4"	590

NOTE: PILE ENCASMENT MAY BE STOPPED 1'-0" BELOW THE BOTTOM OF CAP. THE CONTRACTOR SHALL CLEAN AND PAINT THE STEEL PLATE AND THE PILING FROM THE BOTTOM OF THE CAP TO 12" BELOW THE TOP OF THE PILE ENCASMENTS AS PER SPECIFICATIONS. TOP OF ENCASMENT SHALL BE SLOPED TO DRAIN.

CONECUH BRIDGE & ENGINEERING, LLC
 P. O. Box 129 249 County Rd. 2227
 Troy, Alabama 36081 Troy, Alabama 36079
 334-566-7422

PRECAST CONCRETE SPLIT BENT CAP FOR USE WITH STEEL PILING & 32' OR 40' PRECAST BRIDGE SLABS 28' CLEAR ROADWAY - 30' SKEW