

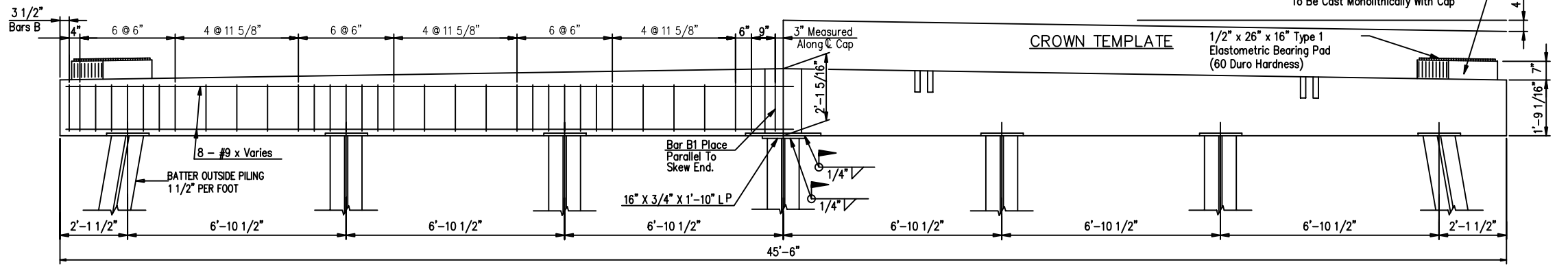
NOTE: ANY GRINDING OR LEVELING ON THE TOP SURFACE OF THE RISER OR CAP THAT MAY BE REQUIRED TO INSURE PROPER SEATING OF THE BARRIER RAIL AND PRECAST CHANNEL SHALL BE PERFORMED BY THE CONTRACTOR AT NO ADDITIONAL COST TO THE PROJECT.

NOTE: LEFT AHEAD BRIDGE AS SHOWN  
 RIGHT AHEAD BRIDGE OPP. HAND

### PLAN - SPLIT INTERMEDIATE BENT

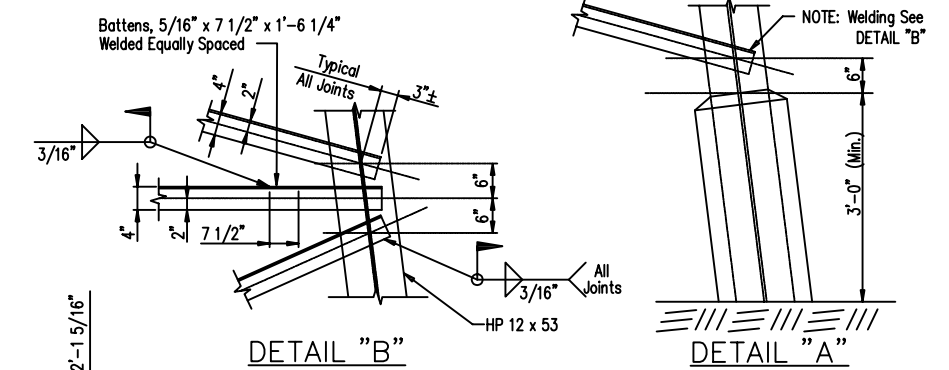
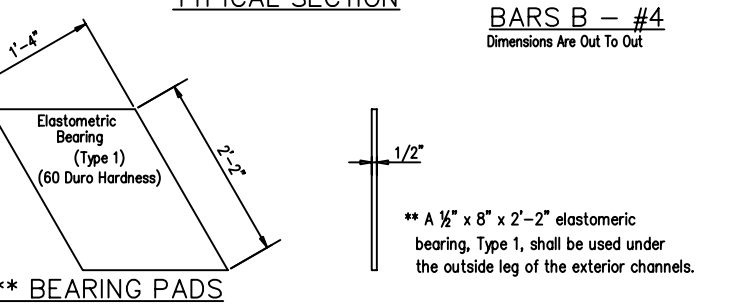
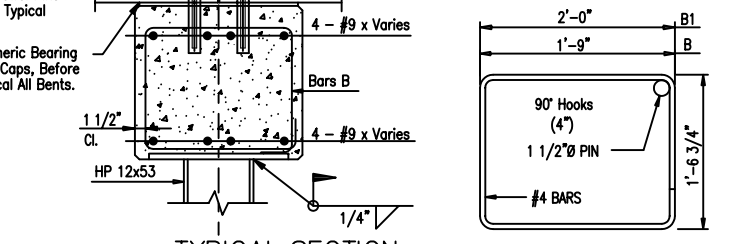
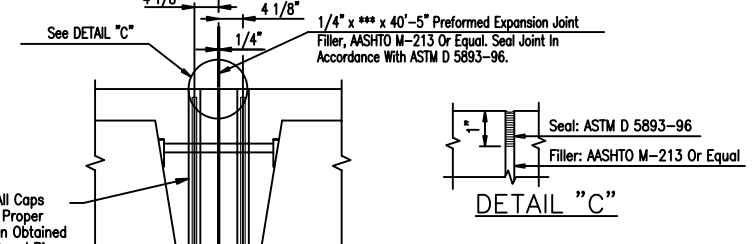
\*\* DEPTH OF RISER BLOCK

32' SPAN	4"
40' SPAN	7"

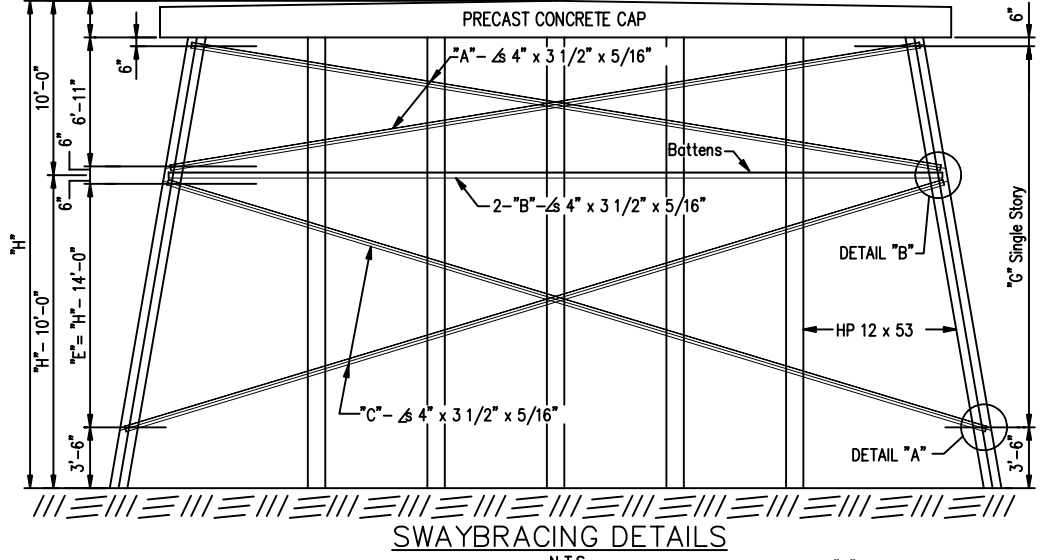
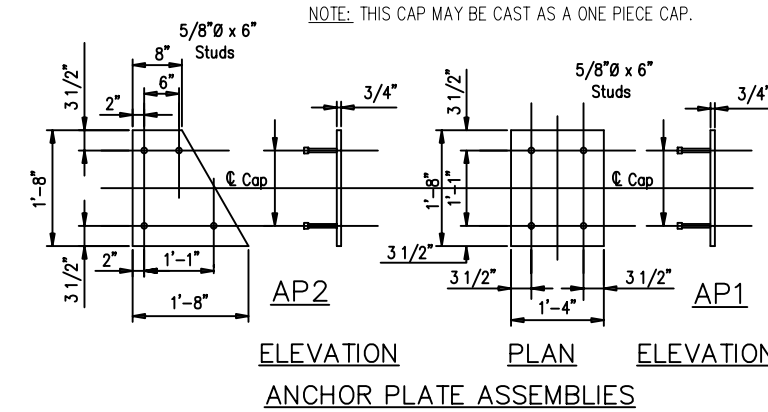
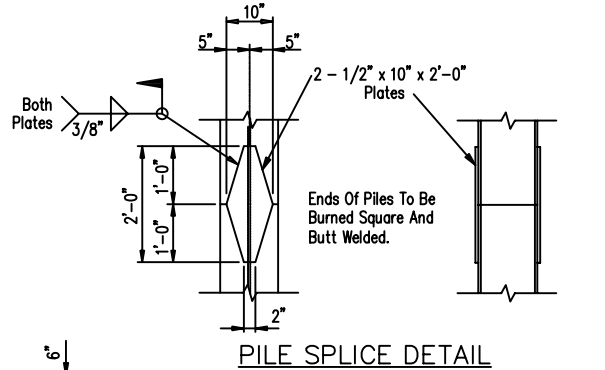


\*\*\* PREFORMED EXP. JT. FILLER

32' SPAN	1/4" x 20" x 40'-5"
40' SPAN	1/4" x 23" x 40'-5"

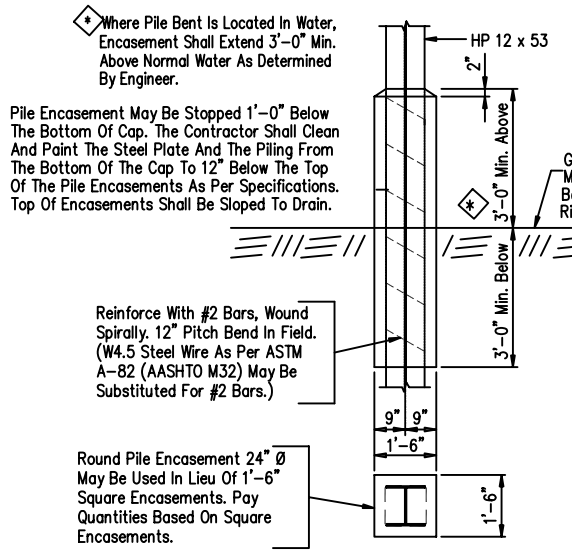


### ELEVATION - SPLIT INTERMEDIATE BENT



Two Story Bent Shown, Single Story Bents Similar. Swaybracing For Single Story Bents Shall Be 4" x 3 1/2" x 5/16" Angles & Designated By The Letter "D". All Piling At Ground And, Or Water Line Shall Be Encased In Concrete, Note Encasement Details.

\* Where "H" Is Less Than 13 Feet, Extend The Encasement To The Bottom Of The Cap And Omit Swaybracing.



NOTE: Where Sufficient Pile Penetration Cannot Be Obtained, Piles Shall Be Encased With Concrete Pedestals As Shown. Cost Of Concrete Pedestals To Be Paid For In Accordance With Subarticle 505.05(f) Of The Standard Specifications. Approval For Use Must Be Obtained From The Bureau Of Construction.

DETAILS FOR PILING ON CONCRETE PEDESTAL FOUNDATION

"H"	"E"	"A"	"B"	"C"	WT. LBS.
20'-0"	6'-0"	43'-8"	44'-6"	46'-0"	2066
21'-0"	7'-0"	43'-8"	44'-6"	46'-3"	2070
22'-0"	8'-0"	43'-8"	44'-6"	46'-7"	2075
23'-0"	9'-0"	43'-8"	44'-6"	46'-11"	2080
24'-0"	10'-0"	43'-8"	44'-6"	47'-4"	2087
25'-0"	11'-0"	43'-8"	44'-6"	47'-8"	2092

NOTE: Weight Given Is Total For Two Pieces Of Each Length Of Swaybracing Shown In Both Tables.

"H"	"G"	"D"	WT. LBS.
13'-0"	6'-11"	43'-8"	672
14'-0"	7'-11"	44'-1"	679
15'-0"	8'-11"	44'-5"	684
16'-0"	9'-11"	44'-9"	689
17'-0"	10'-11"	45'-2"	696
18'-0"	11'-11"	45'-7"	702
19'-0"	12'-11"	46'-1"	710

**GENERAL NOTES:**  
**SPECIFICATIONS:**  
 AASHTO STANDARD SPECIFICATIONS FOR HIGHWAY BRIDGES  
 AASHTO STANDARD SPECIFICATIONS FOR TRANSPORTATION MATERIALS  
 AMERICAN SOCIETY FOR TESTING AND MATERIALS  
 AMERICAN INSTITUTE OF STEEL CONSTRUCTION  
**DESIGN LOADING:** A.A.S.H.T.O. HS 20-44  
**CONCRETE:** CONCRETE SHALL CONFORM TO AASHTO CLASS A. MINIMUM 28 DAY COMPRESSIVE STRENGTH SHALL BE 3000 PSI. ALL EXPOSED CORNERS TO BE CHAMFERED 3/4" x 45° UNLESS OTHERWISE NOTED.  
**REINFORCING STEEL:** ALL REINFORCING STEEL SHALL BE GRADE 60 BILLET STEEL MEETING THE REQUIREMENTS OF AASHTO M31 OR ASTM A615. ALL REINFORCING STEEL SHALL BE ACCURATELY LOCATED IN THE FORMS AND PROPER CLEARANCES MAINTAINED WITH STAINLESS STEEL OR RUBBER TIPPED CHAIRS. REINFORCING DIMENSIONS ARE CENTER TO CENTER UNLESS OTHERWISE NOTED ON PLANS.  
**STRUCTURAL STEEL AND PILING:** ALL STRUCTURAL STEEL SHALL COMPLY WITH AASHTO M270 GRADE 36. ALL PILING SHALL BE 12" STEEL "H" PILING, 53 LBS PER FOOT. PILE DESIGN LOADING 40 TONS (HS20-44).  
**WELDING:** ALL WELDING SHALL CONFORM TO ANS/AASHTO/ANS D 1.5 "BRIDGE WELDING CODE"  
**TOLERANCES:** A DEVIATION OF MORE THAN 1/8" MAY BE CAUSE FOR REJECTION OF THE UNIT.  
**DESIGN DATA:** AASHTO 1992 & INTERIM  $f_s = 24,000$  p.s.i.;  $f_c = 1,200$  p.s.i.;  $n = 10$   
**BID ITEM:**  
 ELASTOMERIC BEARINGS TYPE 1 - PER EACH  
 PRECAST CONCRETE ABUTMENT CAPS, 2'-0" WIDE BY 2'-1 5/16" DEEP BY 45'-6" LONG - PER EACH.

**C&E CONE CUBH BRIDGE & ENGINEERING, LLC**  
 P. O. Box 129  
 Troy, Alabama 36081  
 249 County Rd. 2227  
 Troy, Alabama 36079  
 334-566-7422

**PRECAST CONCRETE SPLIT BENT CAP FOR USE WITH STEEL PILING & 32' OR 40' PRECAST BRIDGE SLABS 35' CLEAR RADWAY - 30' SKEW**

DATE: 7/25/03  
 STANDARD DWG. NO. PCB-3540-30  
 SHEET NO. 1 OF 1