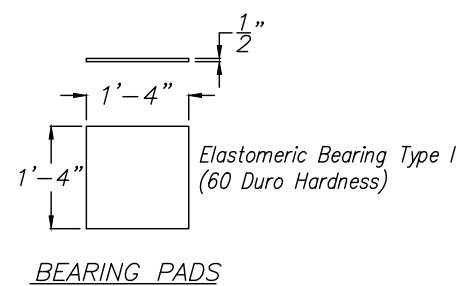
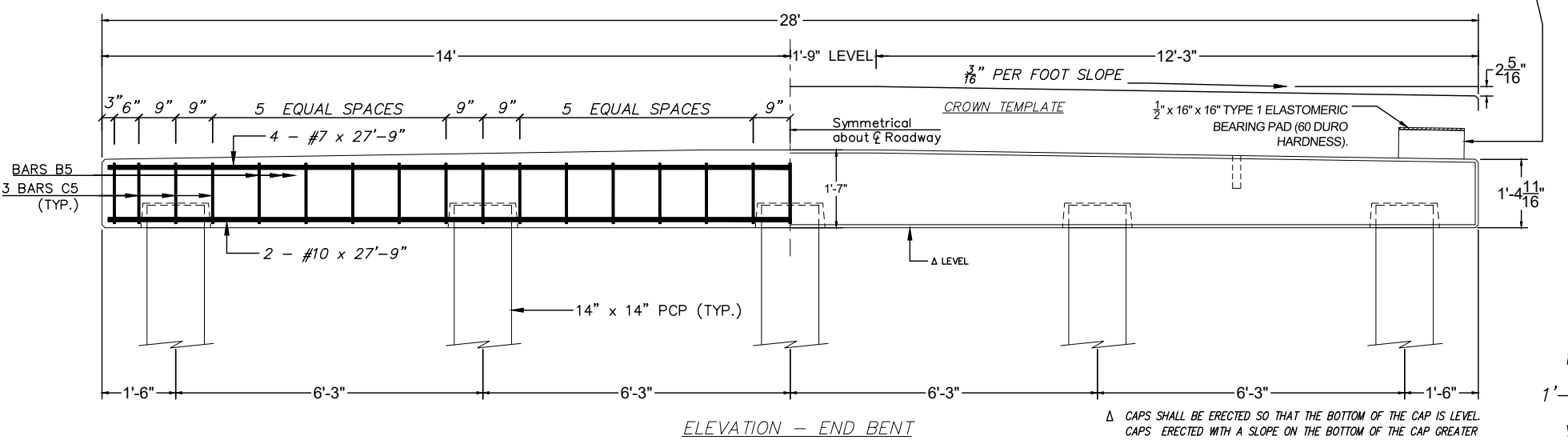
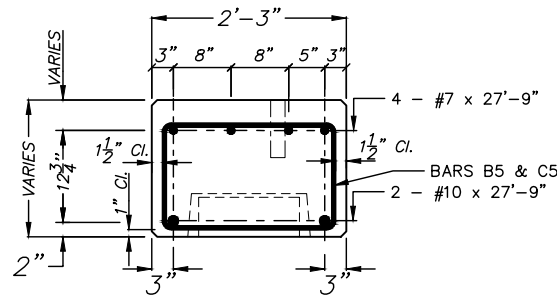
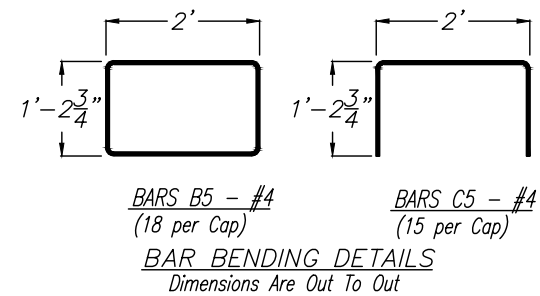


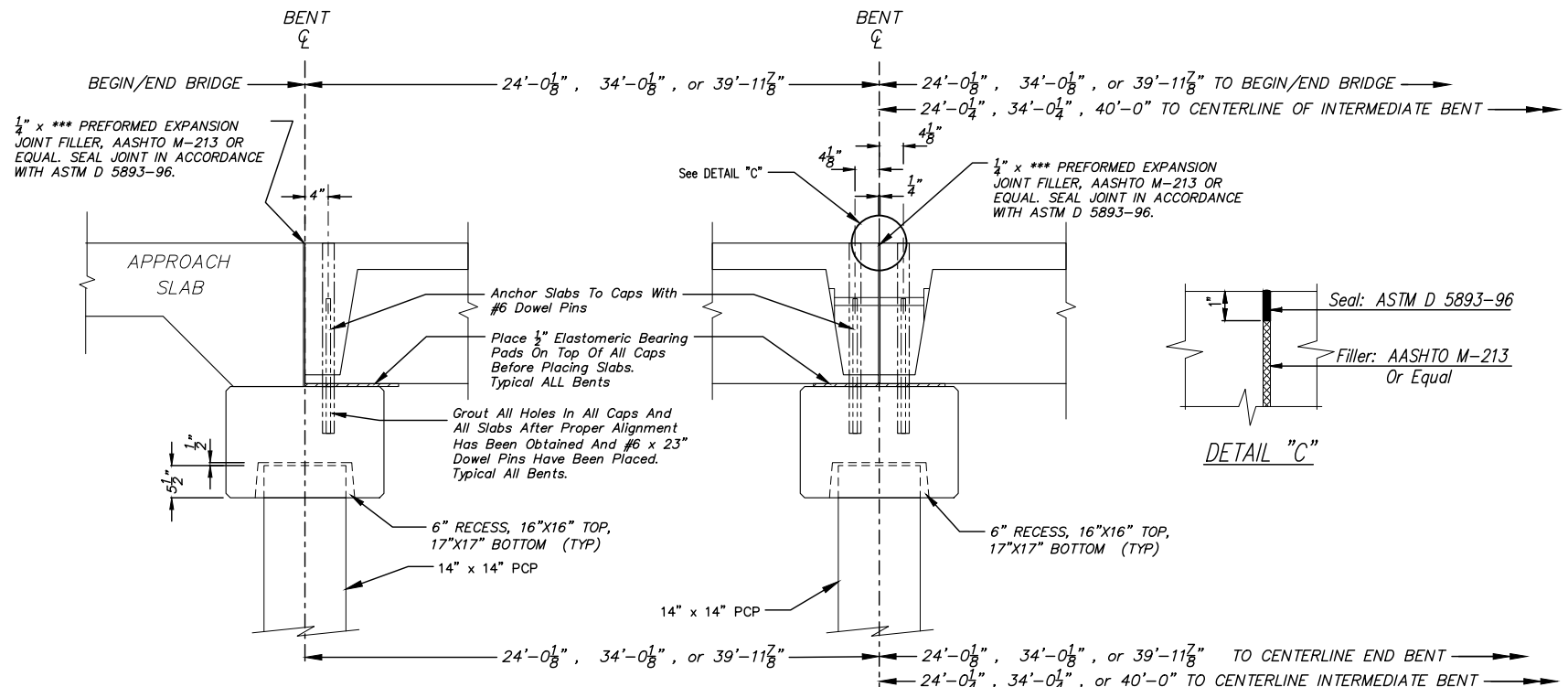
** DEPTH OF RISER BLOCK	
24' SPAN	NA
34' SPAN	4"
40' SPAN	7"

*** PREFORMED EXP. JT. FILLER	
24' SPAN	1/4" x 16" x 24'-6"
34' SPAN	1/4" x 20" x 24'-6"
40' SPAN	1/4" x 23" x 24'-6"



GENERAL NOTES:

- SPECIFICATIONS:**
 AASHTO LRFD BRIDGE CONSTRUCTION SPECIFICATIONS
 AASHTO STANDARD SPECIFICATIONS FOR TRANSPORTATION MATERIALS AND METHODS OF SAMPLING AND TESTING
 AMERICAN SOCIETY FOR TESTING AND MATERIALS
 AMERICAN INSTITUTE OF STEEL CONSTRUCTION
- REINFORCING STEEL:** ALL REINFORCING STEEL SHALL BE GRADE 60 BILLET STEEL MEETING THE REQUIREMENTS OF AASHTO M31. ALL REINFORCING STEEL SHALL BE ACCURATELY LOCATED IN THE FORMS AND PROPER CLEARANCES MAINTAINED WITH STAINLESS STEEL, PLASTIC, OR RUBBER TIPPED CHAIRS. REINFORCING DIMENSIONS ARE CENTER TO CENTER UNLESS OTHERWISE NOTED ON PLANS.
- CONCRETE:** CONCRETE SHALL CONFORM TO AASHTO CLASS A(AE). MINIMUM 28 DAY COMPRESSIVE STRENGTH SHALL BE 3000 PSI. ALL EXPOSED CORNERS TO BE CHAMFERED 3/4" X 45° UNLESS OTHERWISE NOTED.
- PILING:** ALL PILING SHALL BE 14"x14" PRESTRESSED CONCRETE PILE. ALLOWABLE PILE LOAD = 40 TONS WITH A FACTOR OF SAFETY OF 2.0 (MIN.) (HL-93).
- EPOXY GROUT:** EPOXY GROUT SHALL DEVELOP A COMPRESSIVE STRENGTH OF 5000 PSI IN TWELVE (12) HOURS.
- TOLERANCES:** A DEVIATION OF MORE THAN 1/8" MAY BE CAUSE FOR REJECTION OF THE UNIT.
- HARDWARE:** ALL BOLTS SHALL CONFORM TO ASTM A-307 AND BE GALVANIZED IN ACCORDANCE WITH ASTM-A153
- DESIGN DATA:**
 SPECIFICATIONS:.....AASHTO 2017, 8TH EDITION AND ALL INTERIMS
 DESIGN LOADING:.....HL-93



TYPICAL END SECTION WITH APPROACH SLAB

TYPICAL INTERMEDIATE SECTION WITH APPROACH SLAB



457 St. Michael St. Suite 102
 Mobile, AL 36602
 (251) 433-1611

Cowles, Murphy, Glover & ASSOCIATES
 A Full Service Engineering Firm
 PERFORMANCE RELIABILITY EXPERIENCE

11880 Cranston Dr. Suite 102
 Arlington, TN 38002
 (901) 290-5444

C&E CONECCU H BRIDGE & ENGINEERING, INC
 P. O. Box 129 Troy, Alabama 36081
 249 Pike County Lake Rd. Troy, Alabama 36079
 334-566-7422

PRECAST CONCRETE END BENT CAP FOR USE WITH 14"x14' CONCRETE PILING & 24', 34', OR 40' PRECAST BRIDGE SLABS 24'-6" CLEAR ROADWAY WITH APPROACH SLAB

DATE: 12/05/2022
 STANDARD DWG. NO. PCA-2440-CP-AS LRFD
 SHEET NO. 10 OF 27