

GENERAL NOTES

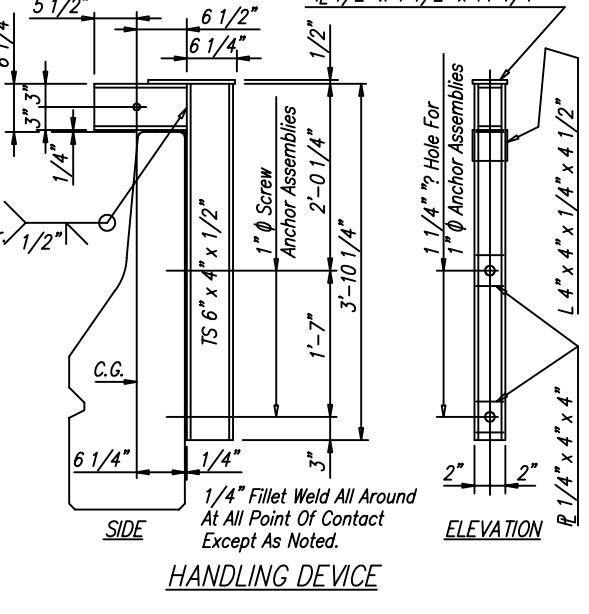
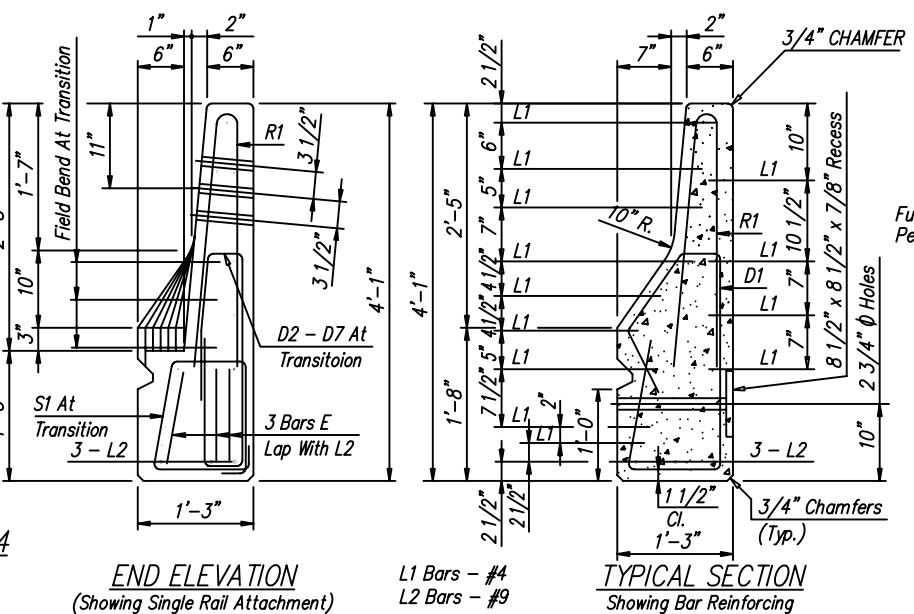
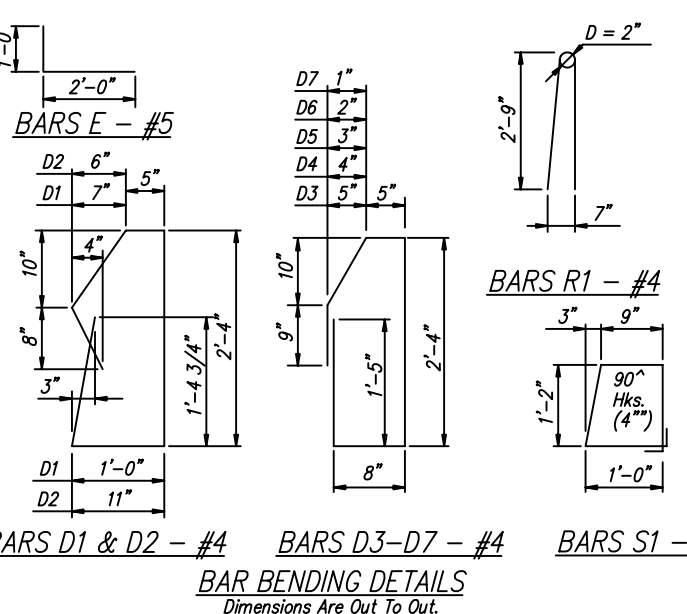
SPECIFICATIONS:
 AASHTO STANDARD SPECIFICATIONS FOR HIGHWAY BRIDGES
 AASHTO STANDARD SPECIFICATIONS FOR TRANSPORTATION MATERIALS
 AMERICAN SOCIETY FOR TESTING AND MATERIALS

DESIGN LOADING: AASHTO HS 20-44

REINFORCING STEEL: ALL REINFORCING STEEL SHALL BE BILLET STEEL MEETING THE REQUIREMENTS OF AASHTO M31 OR ASTM A165 BARS TYPE L SHALL BE GRADE 60. ALL OTHER REINFORCING BARS SHALL HAVE MINIMUM STRENGTH OF GRADE 40.

CONCRETE: CONCRETE SHALL CONFORM TO AASHTO CLASS AE WITH A MINIMAL 28 DAY BREAKING STRENGTH OF 5000 PSI.

SURFACE FINISH: FINISH FOR RAILING SHALL BE IN ACCORDANCE WITH SECTION 8.10.1, DIVISION II - CONSTRUCTION, AASHTO STANDARD SPECIFICATIONS FOR HIGHWAY BRIDGES, 1996 EDITION. ADDITIONALLY THE TRAFFIC SIDE, TOP, AND BACK OF THE RAIL MUST BE COATED WITH A PRODUCT SUCH AS THOROCOAT AS PRODUCED BY CHEMREX, INC. OR EQUAL.



CONECUH BRIDGE & ENGINEERING, LLC

P. O. Box 129
Troy, Alabama 36081

249 County Rd. 2227
Troy, Alabama 36079

334-566-7422

**PRECAST CONCRETE BARRIER RAIL
FOR USE WITH
PRECAST SLAB STANDARD
PC-40**

DATE: 7/18/03

STANDARD DWG. NO. PCBR-1(40)
SHEET NO. 1 OF 1

P40 (3/4"=1') 2-16-98