

DETAIL "B"

GENERAL NOTES

SPECIFICATIONS:
 AASHTO STANDARD SPECIFICATIONS FOR HIGHWAY BRIDGES
 AASHTO STANDARD SPECIFICATIONS FOR TRANSPORTATION MATERIALS
 AMERICAN SOCIETY FOR TESTING AND MATERIALS

CONCRETE:
 CONCRETE SHALL CONFORM TO AASHTO CLASS AE WITH A MINIMAL 28 DAY BREAKING STRENGTH OF 3000 PSI. ALL EXPOSED CORNERS SHALL BE ROUNDED TO A 1/4" RADIUS UNLESS OTHERWISE NOTED.

REINFORCING:
 ALL REINFORCING STEEL SHOULD BE ACCURATELY LOCATED IN THE FORMS AND FIRMLY HELD IN PLACE. REINFORCING STEEL SHALL MEET THE REQUIREMENTS OF THE APPROPRIATE SECTION OF AASHTO M31, AASHTO M32, AASHTO M221 OR AASHTO M225. REINFORCING DIMENSIONS ARE TO THE "S" OF BARS UNLESS OTHERWISE NOTED. THE ABOVE STEEL WILL NOT BE PAID FOR DIRECTLY, BUT WILL BE CONSIDERED AS SUBSIDIARY TO THE ITEM OF PRECAST CONCRETE ABUTMENT PANELS.

HARDWARE:
 ALL MACHINE BOLTS CONNECTING CONCRETE ABUTMENT PANELS TO PILING SHALL BE CONSIDERED INCIDENTAL TO THE WORK.
 ALL BOLTS SHALL CONFORM TO ASTM A-307 AND BE GALVANIZED IN ACCORDANCE WITH ASTM A-153.

BID ITEMS:
 _____ PRECAST CONCRETE ABUTMENT PANELS, TYPE _____ - EACH.
 _____ PRECAST CONCRETE WING PANELS TYPE _____ - EACH.
 _____ PRECAST CONCRETE ABUTMENT WING CAP PANELS - EACH.
 _____ PRECAST CONCRETE ABUTMENT WING CAP PANELS, SPECIAL - EACH.
 _____ WIRE ROPE ABUTMENT ANCHOR ASSEMBLY - PER EACH.

DESIGN DATA:
 $f_c = 1200 \text{ PSI}$; $f_s = 24,000 \text{ PSI}$; $N = 10$

NOTE: REFER TO STANDARD DRAWING PCP-2400 & PCP-2800 FOR ABUTMENT & WING PANEL DETAILS NOT SHOWN HEREON.

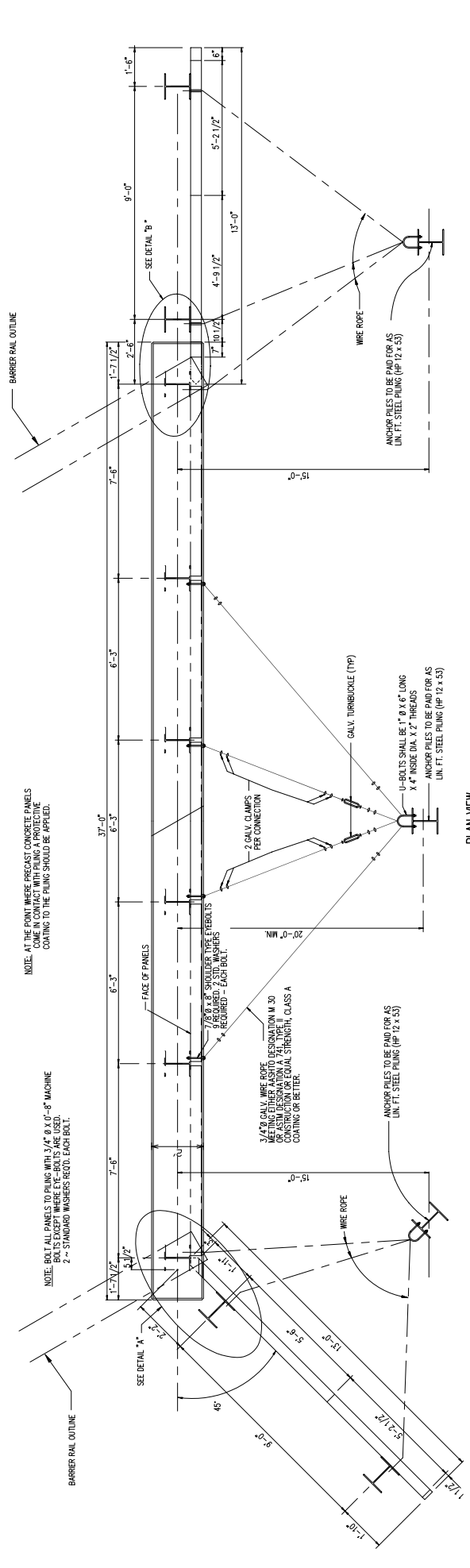
CBE CONECUH BRIDGE & ENGINEERING, LLC
 P. O. Box 129
 Troy, Alabama 36081
 334-566-7422

249 County Rd. 2227
 Troy, Alabama 36079

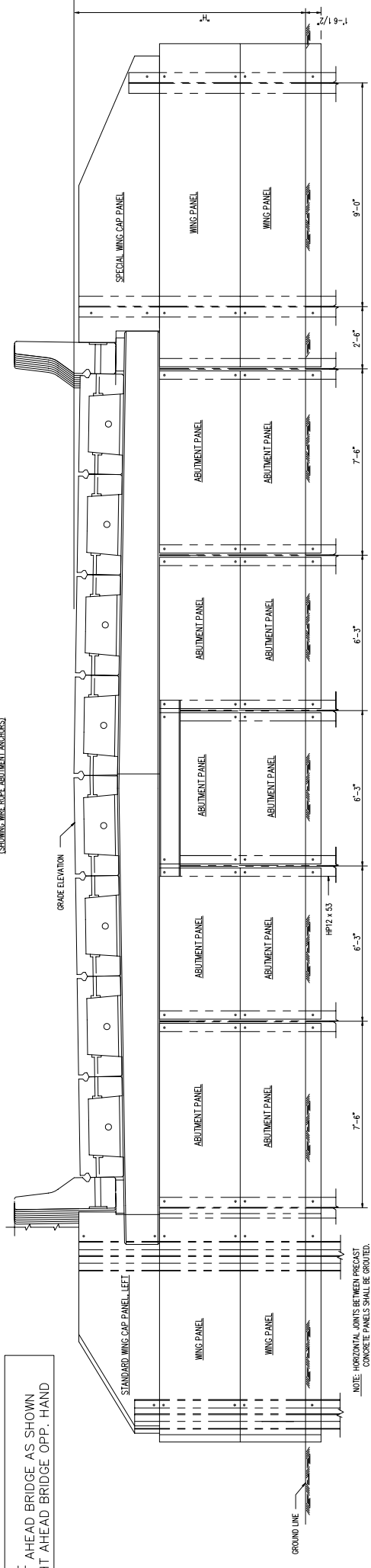
PRECAST CONCRETE ABUTMENT PANELS
 FOR USE WITH 32' & 40'
 PRECAST CONCRETE SPANS
 28'-0" CLEAR ROADWAY ON 30' SKEW

STANDARD DWG. NO.
PCP-2800 -30
 SHEET NO. 1 OF 1

DATE:
7/18/03

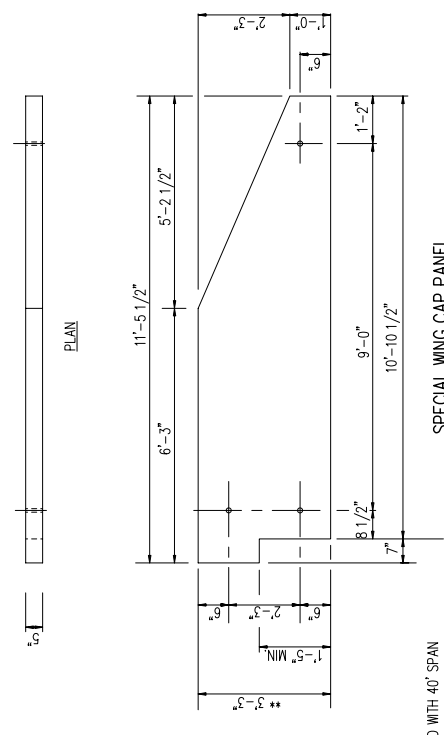


PLAN VIEW
 (SHOWING WIRE ROPE ABUTMENT ANCHORS)



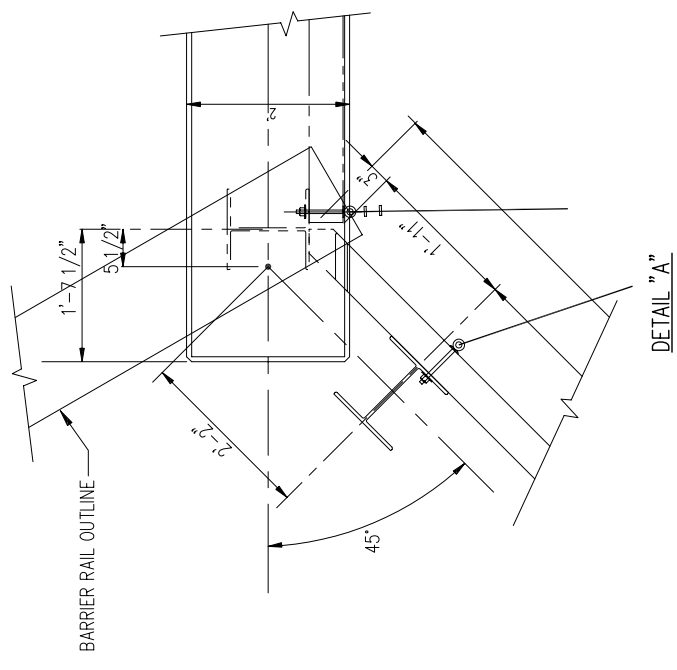
ELEVATION

NOTE: FACE OF PANELS SHALL BE PERMANENTLY MARKED BY FABRICATOR FOR ERECTION.

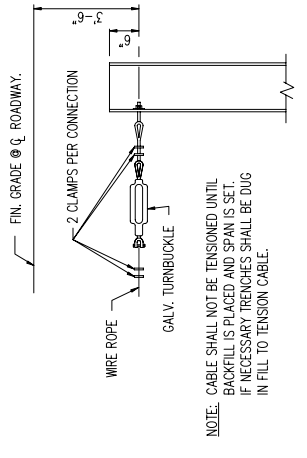


SPECIAL WING CAP PANEL

** NOTE: WHEN USED WITH 40' SPAN BRIDGE, CHANGE TO 3'-6"



DETAIL "A"



PART ELEVATION OF PILE ANCHOR

NOTE: THE CONTRACTOR SHALL HAVE THE OPTION OF ATTACHING THE TURNBUCKLE DIRECTLY TO THE U-BOLT ON THE ANCHOR PILE.

NOTE:
 LEFT AHEAD BRIDGE AS SHOWN
 RIGHT AHEAD BRIDGE OPP. HAND

NOTE: HORIZONTAL JOINTS BETWEEN PRECAST CONCRETE PANELS SHALL BE GROUDED.

NOTE: PILES TO BE DRILLED IN PILES FOR ATTACHING CONCRETE PANELS.

NOTE: CABLE SHALL NOT BE TENSIONED UNTIL BACKFILL IS PLACED AND SPAN IS SET. IF NECESSARY, TRENCHES SHALL BE DUG IN FILL TO TENSION CABLE.