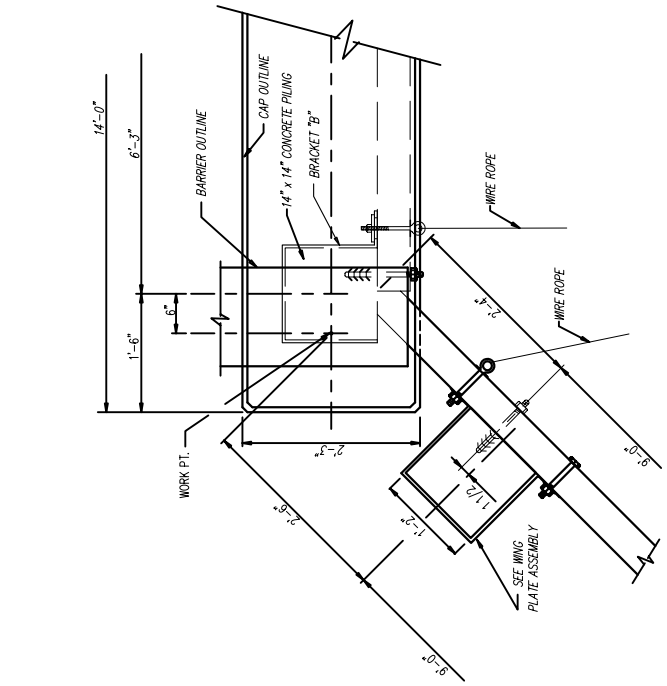
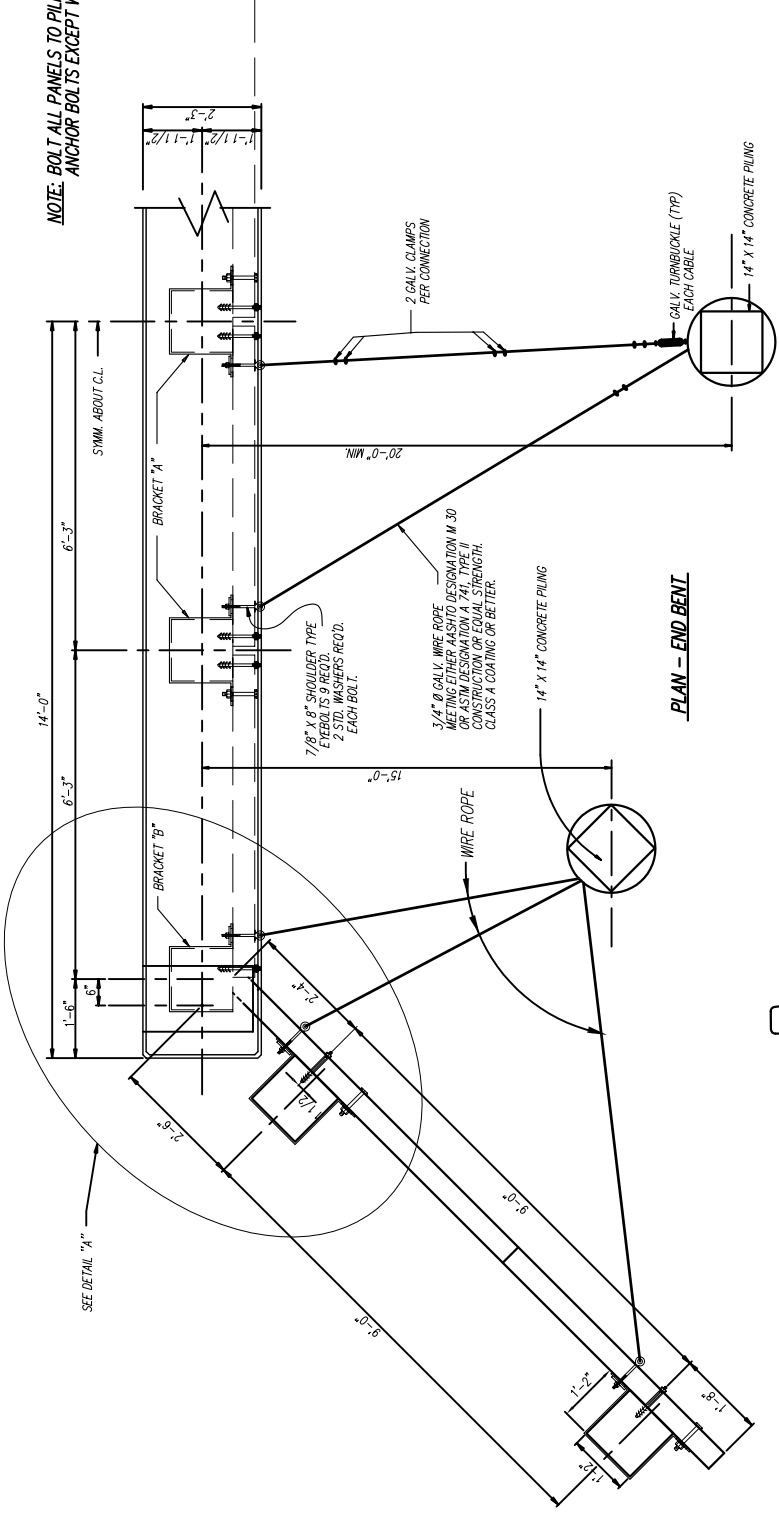


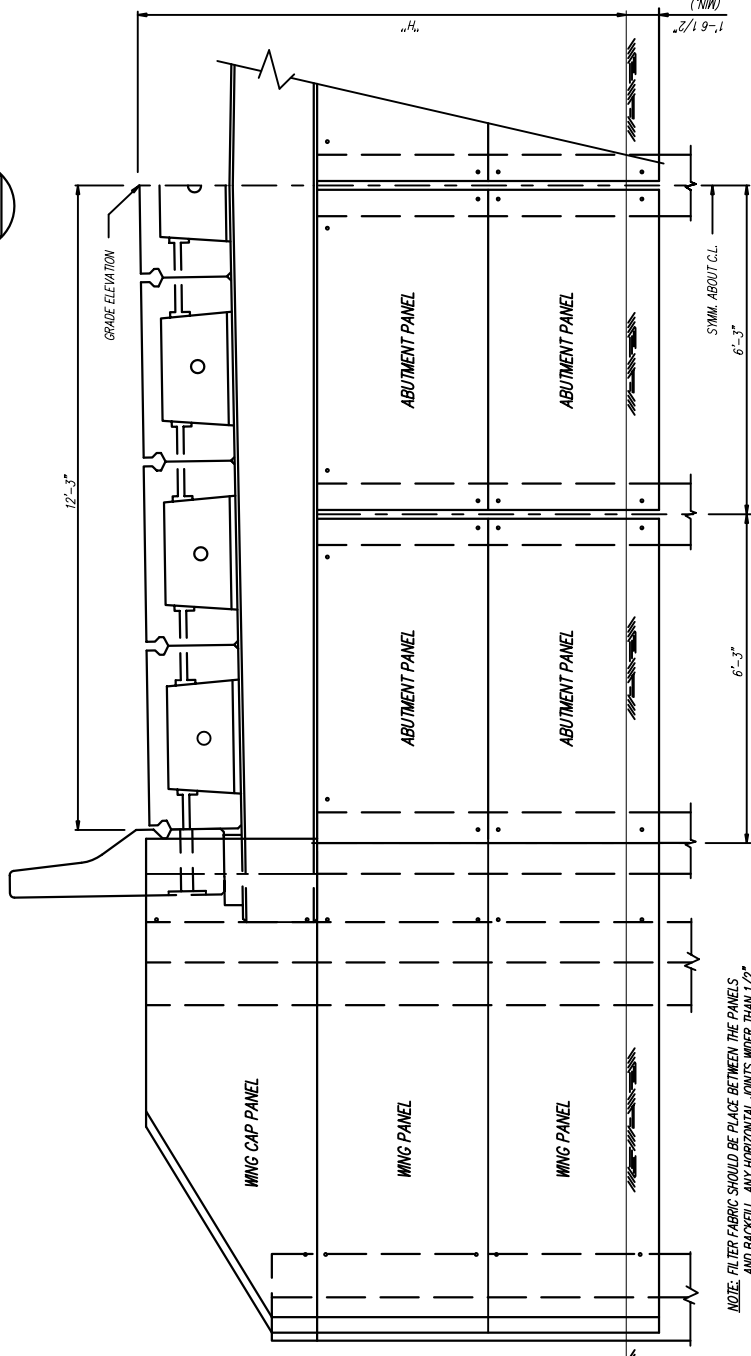
NOTE: BOLT ALL PANELS TO PILING WITH 3/4" Ø x 10" EXPANSION WEDGE ANCHOR BOLTS EXCEPT WHERE BRACKETS ARE USED.



DETAIL "A"

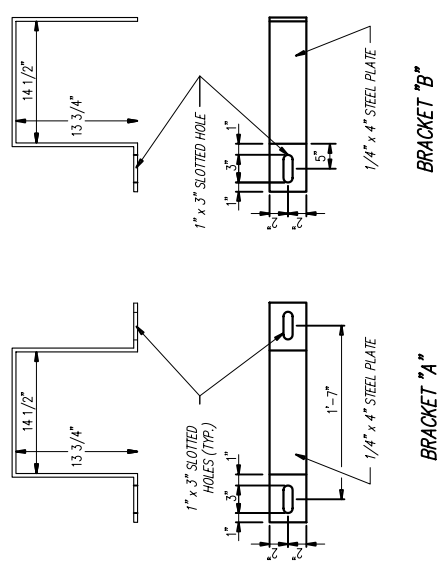
NOTE: BRACKET "A" IS USED AT ALL LOCATIONS WITH A CABLE CONNECTION EXCEPT THE OUTSIDE PILE ON EACH END OF THE CAP WHERE A BRACKET "B" IS USED. IF A POURED IN PLACE CAP IS USED, THE BRACKETS "A" UNDER THE CAP CAN BE ELIMINATED AND THE EYE BOLTS CAST IN THE CAP.

NOTE: FACE OF PANELS SHALL BE PERMANENTLY MARKED BY FABRICATOR FOR ERECTION.

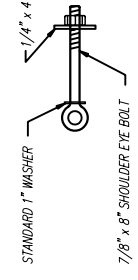


HALF ELEVATION

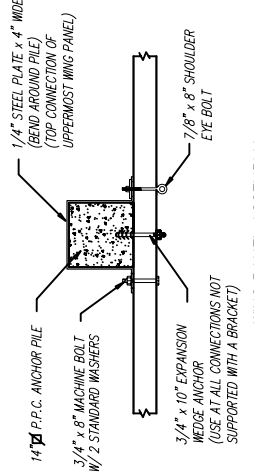
NOTE: FILTER FABRIC SHOULD BE PLACED BETWEEN THE PANELS AND BELOW ALL VERTICAL JOINTS. IF FILTER FABRIC IS NOT USED, THEN ALL HORIZONTAL JOINTS SHALL BE GROUTED.



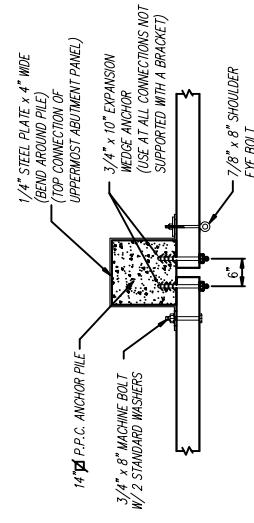
STEEL BRACKETS DETAIL



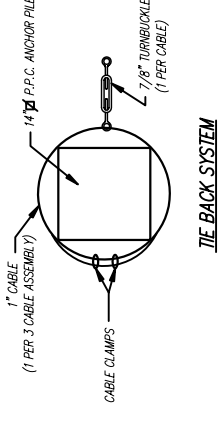
EYE BOLT DETAIL



WING PANEL ASSEMBLY



ABUTMENT PANEL ASSEMBLY



TIE-BACK SYSTEM

NOTE: ONE WIRE ROPE ABUTMENT ANCHOR ASSEMBLY CONSIST OF ALL CABLE AND HARDWARE REQUIRED TO DO ONE END OF A BRIDGE. THEREFORE, THERE ARE TWO PER BRIDGE.

GENERAL NOTES

SPECIFICATIONS:  
AASHTO STANDARD SPECIFICATIONS FOR HIGHWAY BRIDGES  
AASHTO STANDARD SPECIFICATIONS FOR TRANSPORTATION MATERIALS  
AMERICAN SOCIETY FOR TESTING AND MATERIALS

CONCRETE:  
CONCRETE SHALL CONFORM TO AASHTO CLASS AE WITH A MINIMAL 28 DAY BREAKING STRENGTH OF 3000 PSI. ALL EXPOSED CORNERS SHALL BE ROUNDED TO A 1/4" RADIUS UNLESS OTHERWISE NOTED.

REINFORCING:  
ALL REINFORCING STEEL SHOULD BE ACCURATELY LOCATED IN THE FORMS AND FIRMLY HELD IN PLACE. REINFORCING STEEL SHALL MEET THE REQUIREMENTS OF THE APPROPRIATE SECTION OF AASHTO M31, AASHTO M32, AASHTO M221 OR AASHTO M225. REINFORCING DIMENSIONS ARE TO THE 5/8" OF BARS UNLESS OTHERWISE NOTED. THE ABOVE STEEL WILL NOT BE PAID FOR DIRECTLY, BUT WILL BE CONSIDERED AS SUBSIDIARY TO THE ITEM OF PRECAST CONCRETE ABUTMENT PANELS.

HARDWARE:

ALL BOLTS CONNECTING CONCRETE ABUTMENT PANELS TO PILING SHALL BE CONSIDERED INCIDENTAL TO THE WORK.  
ALL BOLTS SHALL CONFORM TO ASTM A-307 AND BE GALVANIZED IN ACCORDANCE WITH ASTM A-153.

BID ITEMS:

- PRECAST CONCRETE ABUTMENT PANELS, TYPE \_\_\_\_\_ - EACH.
- PRECAST CONCRETE WING PANELS, TYPE \_\_\_\_\_ - EACH.
- PRECAST CONCRETE ABUTMENT WING CAP PANELS - EACH.
- WIRE ROPE ABUTMENT ANCHOR ASSEMBLY - PER EACH.

DESIGN DATA:

f<sub>c</sub> = 12000 PSI ; f<sub>s</sub> = 24,000 PSI ; N = 10

NOTE: FOR PANEL DETAILS NOT SHOWN SEE STD. DWG. NO. PCP-2400.

**CBE CONECUH BRIDGE & ENGINEERING, LLC**  
P. O. Box 129  
Troy, Alabama 36081

249 County Rd. 2227  
Troy, Alabama 36079  
334-566-7422

PRECAST CONCRETE ABUTMENT PANELS  
FOR USE WITH 24', 34' & 40'  
PRECAST CONCRETE SPANS

24'-0" & 24'-6" CLEAR ROADWAY AND CONCRETE PILING

STANDARD DWG. NO.

PCP-2400-CP

SHEET NO. 1 OF 1

DATE:

7/18/03