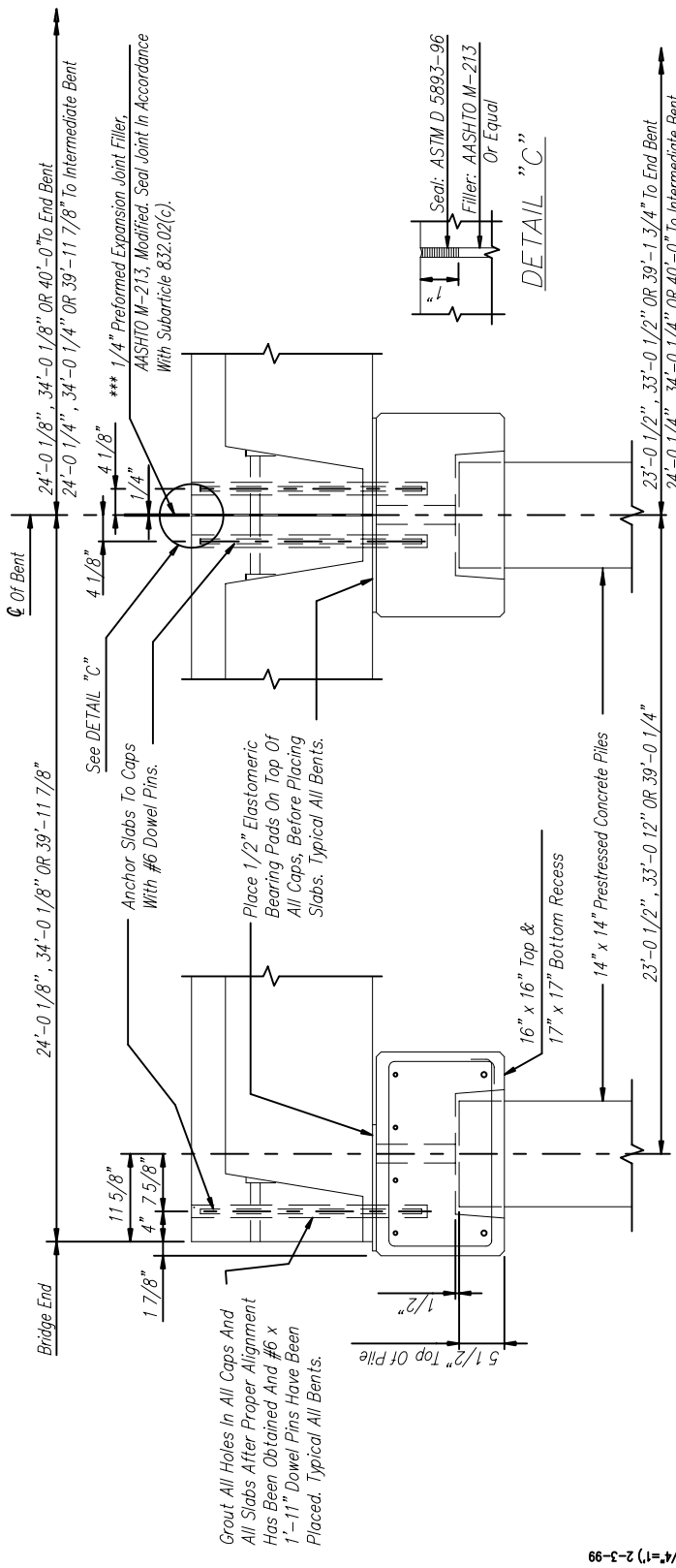


PLAN - END BENT

ELEVATION - END BENT

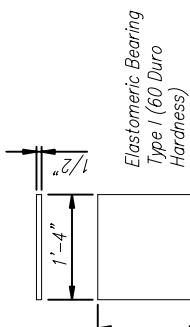


TYPICAL END SECTION

TYPICAL INTERMEDIATE SECTION

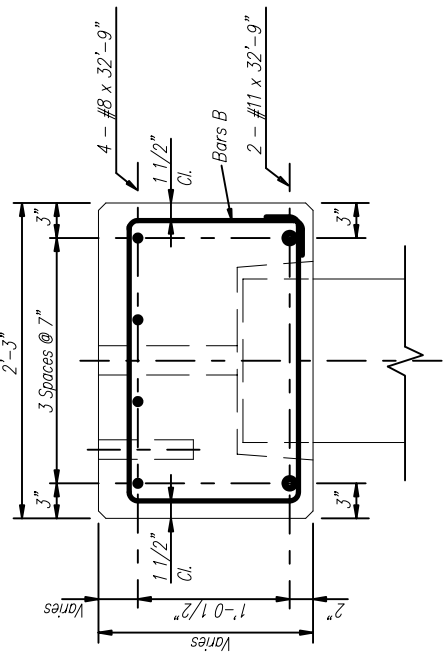
\*\*\* PREFORMED EXP. JT. FILLER

24' Span	1/4" x 16" x 28"
34' Span	1/4" x 20" x 28"
40' Span	1/4" x 23" x 28"

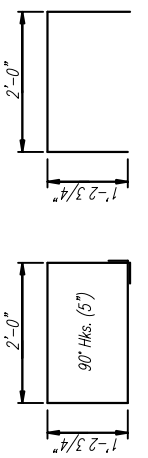


\* BEARING PADS

\* A 1/2" x 8" x 1'-4" Elastomeric Bearing, Type 1 Shall Be Used Under The Outside Legs Of The Exterior Channels.



STEEL PLACEMENT DETAIL



BAR BENDING DETAILS  
Dimensions Are Out To Out

\*\* DEPTH OF RISER BLOCK

24' Span	NA
34' Span	4"
40' Span	7"

GENERAL NOTES:

SPECIFICATIONS:  
AASHTO STANDARD SPECIFICATIONS FOR HIGHWAY BRIDGES  
AASHTO STANDARD SPECIFICATIONS FOR TRANSPORTATION MATERIALS  
AMERICAN SOCIETY FOR TESTING AND MATERIALS  
AMERICAN INSTITUTE OF STEEL CONSTRUCTION  
DESIGN LOADINGS: A.A.S.H.T.O. HS 20-44

CONCRETE: CONCRETE FOR SUBSTRUCTURE UNITS SHALL CONFORM TO AASHTO CLASS A. MINIMUM 28 DAY COMPRESSIVE STRENGTH SHALL BE 3000 PSI. ALL EXPOSED CORNERS TO BE CHAMFERED 3/4" BY 45° UNLESS OTHERWISE NOTED. ALL OTHER CORNERS ARE TO BE ROUNDED TO A 1/4" RADIUS. CONCRETE WILL NOT BE PAID FOR DIRECTLY, BUT WILL BE CONSIDERED AS SUBSIDIARY TO THE ITEM PRECAST CAP UNIT.

REINFORCING STEEL: ALL REINFORCING STEEL SHALL BE GRADE 60 BILLET STEEL MEETING THE REQUIREMENTS OF AASHTO M31 OR ASTM A615. ALL REINFORCING STEEL SHALL BE ACCURATELY LOCATED IN THE FORMS AND PROPER CLEARANCES MAINTAINED WITH STAINLESS STEEL OR RUBBER TIPPED CHAIRS. REINFORCING DIMENSIONS ARE CENTER TO CENTER UNLESS OTHERWISE NOTED ON PLANS. THE ABOVE STEEL WILL NOT BE PAID FOR DIRECTLY, BUT WILL BE CONSIDERED AS SUBSIDIARY TO THE ITEM PRECAST CONCRETE CAP UNIT.

PIILING: ALL PILING SHALL BE 14" x 14" PRESTRESSED CONCRETE AS PER SECTION 4.5.20 OF THE CURRENT EDITION OF AASHTO STANDARD SPECIFICATIONS FOR HIGHWAY BRIDGES, DIVISION 1. PILE DESIGN LOADING 28 TONS (HS20-44).

GROUT: EPOXY GROUT FOR CAPS TO PILING CONNECTION SHALL BE COMPOSED OF ONE (1) PART EPOXY (BINDER) AND THREE (3) PARTS DRY SILICA SAND. (BAGGED 1 CU. FT. PER BAG) MEASURED BY VOLUME. IT SHALL DEVELOP A MINIMUM COMPRESSIVE STRENGTH OF 5,000 p.s.i. IN THREE (3) HOURS. CONTRACTOR SHALL SUBMIT METHOD OF SAMPLING AND TESTING TO VERIFY STRENGTH REQUIREMENT AS REQUIRED BY THE ENGINEER OF RECORD PRIOR TO GROUTING CAPS.

TOLERANCES: A DEVIATION OF MORE THAN 1/8" MAY BE CAUSE FOR REJECTION OF THE UNIT.

DESIGN DATA: A.A.S.H.T.O. 1992 & INTERIM IS = 24,000 p.s.i.; fc = 1,200 p.s.i.; n=10

BID ITEM:  
ELASTOMERIC BEARINGS TYPE 1 - Per Each  
PRECAST CONCRETE ABUTMENT CAP, 2'-3" WIDE BY 1'-8" DEEP BY 33'-0" LONG - Per Each.

**CONECUH BRIDGE & ENGINEERING, LLC**  
P. O. Box 129  
Troy, Alabama 36081  
334-566-7422

249 County Rd. 2227  
Troy, Alabama 36079  
334-566-7422

PRECAST CONCRETE END BENT CAP  
FOR USE WITH 14" X 14" CONCRETE PILING  
AND 24', 34' OR 40' PRECAST CONCRETE  
BRIDGE SLABS -- 28 FT. CLEAR ROADWAY

DATE: 7/24/03  
STANDARD DWG. NO. PCA-2840 CP  
SHEET NO. 1 OF 1