

NOTE: ANY GRINDING OR LEVELING ON THE TOP SURFACE OF THE RISER OR CAP THAT MAY BE REQUIRED TO INSURE PROPER SEATING OF THE BARRIER RAIL AND PRECAST CHANNEL SHALL BE PERFORMED BY THE CONTRACTOR AT NO ADDITIONAL COST TO THE PROJECT.

** DEPTH OF RISER BLOCK	
24' SPAN	NA
34' SPAN	4"
40' SPAN	7"

*** PREFORMED EXP. JT. FILLER	
24' SPAN	1/4" x 16" x 28"
34' SPAN	1/4" x 20" x 28"
40' SPAN	1/4" x 23" x 28"

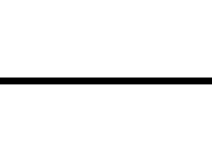
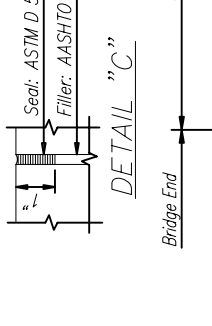
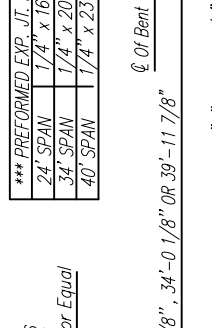
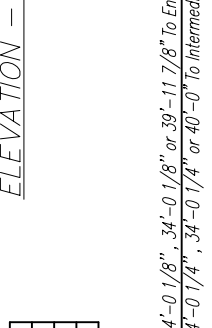
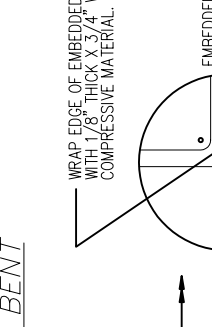
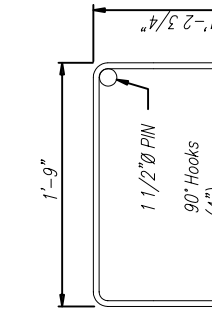
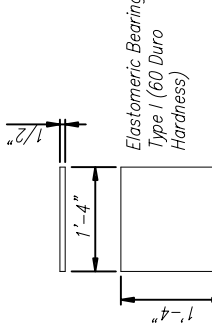
Seal: ASTM D 5893-96	
Filler: AASHTO M-213 or Equal	

ELEVATION - END BENT

PLAN - END BENT

GENERAL NOTES:

SPECIFICATIONS:
 AASHTO STANDARD SPECIFICATIONS FOR HIGHWAY BRIDGES
 AASHTO STANDARD SPECIFICATIONS FOR TRANSPORTATION MATERIALS
 AMERICAN SOCIETY FOR TESTING AND MATERIALS
 AMERICAN INSTITUTE OF STEEL CONSTRUCTION
DESIGN LOADING: A.A.S.H.T.O. HS 20-44
CONCRETE: CONCRETE SHALL CONFORM TO AASHTO CLASS A. MINIMUM 28 DAY COMPRESSIVE STRENGTH SHALL BE 3000 PSI. ALL EXPOSED CORNERS TO BE CHAMFERED 3/4" X 45° UNLESS OTHERWISE NOTED.
REINFORCING STEEL: ALL REINFORCING STEEL SHALL BE GRADE 60 BILLET STEEL MEETING THE REQUIREMENTS OF AASHTO M31 OR ASTM A615. ALL REINFORCING STEEL SHALL BE ACCURATELY LOCATED IN THE FORMS AND PROPER CLEARANCES MAINTAINED WITH STAINLESS STEEL OR RUBBER TIPPED CHAIRS. REINFORCING DIMENSIONS ARE CENTER TO CENTER UNLESS OTHERWISE NOTED ON PLANS.
STRUCTURAL STEEL AND PILING: ALL STRUCTURAL STEEL SHALL COMPLY WITH AASHTO M270 GRADE 36. ALL PILING SHALL BE 12" STEEL "H" PILING, 53 LBS PER FOOT. PILE DESIGN LOADING 28 TONS (HS20-44).
WELDING: ALL WELDING SHALL CONFORM TO ANSI/AASHTO/ANS D 1.5 "BRIDGE WELDING CODE".
TOLERANCES: A DEVIATION OF MORE THAN 1/8" MAY BE CAUSE FOR REJECTION OF THE UNIT.
DESIGN DATA: AASHTO 1992 & INTERIM fs = 24,000 p.s.i.; fc = 1,200 p.s.i.; n = 10
BID ITEM: ELASTOMERIC BEARINGS TYPE I - PER EACH
 PRECAST CONCRETE ABUTMENT CAPS, 2'-0" WIDE BY 1'-8" DEEP BY 33'-0" LONG - PER EACH.



BEARING PADS

BAR BENDING DETAILS

DETAIL "X"

DETAIL "C"

DETAIL "Y"

DETAIL "Z"

ELEVATION

* END BENT BEARING PADS
 * A 1/2" X 8" X 1'-4" Elastomeric Bearing, Type I Shall Be Used Under The Outside Leg Of The Exterior Channels.

Dimensions Are Out To Out

See DETAIL "X"

See DETAIL "C"

See DETAIL "Y"

See DETAIL "Z"

ELEVATION

CONECUH BRIDGE & ENGINEERING, LLC
 P. O. Box 129
 Troy, Alabama 36081
 249 County Rd. 2227
 Troy, Alabama 36079
 334-566-7422

PRECAST CONCRETE END BENT CAP
 FOR USE WITH STEEL PILING & 24', 34', OR 40'
 PRECAST BRIDGE SLABS 28'-0" CLEAR ROADWAY

DATE: 7/24/03
 STANDARD DWG. NO. PCA-2840
 SHEET NO. 1 OF 1

PILE SPLICE DETAIL

STEEL PLACEMENT DETAIL

TYPICAL INTERMEDIATE SECTION

TYPICAL END SECTION