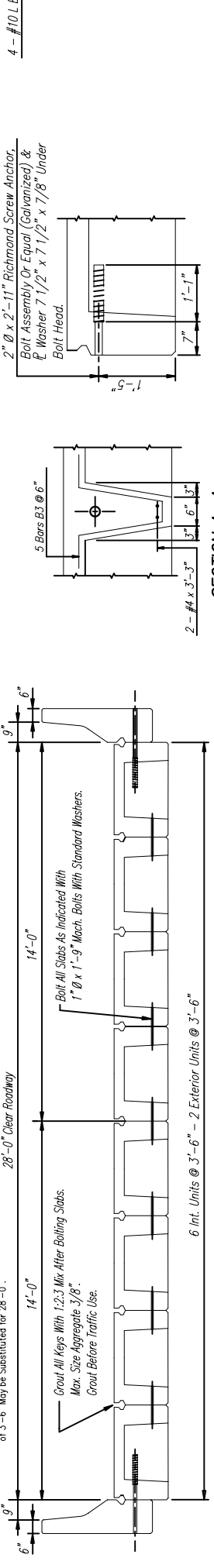


**END SPAN**

**INTERMEDIATE SPAN**

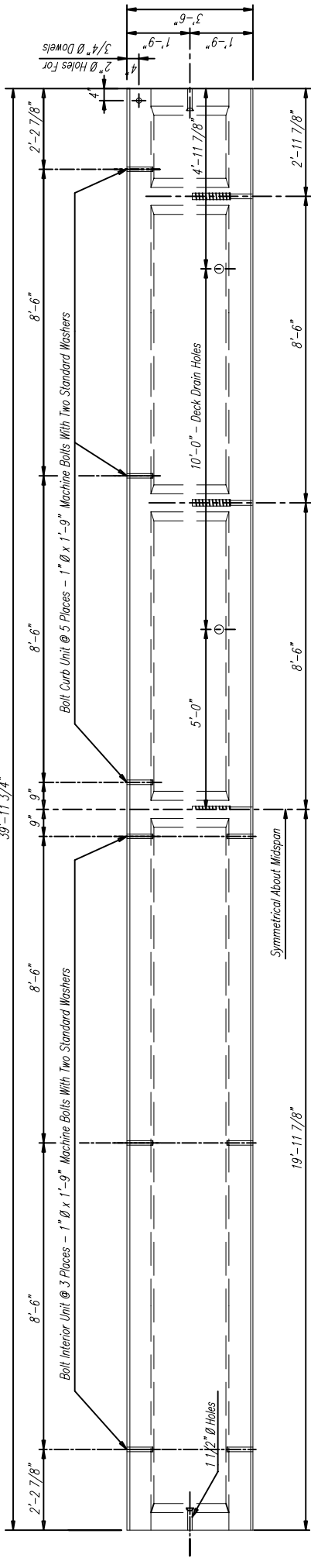
**ELEVATION**



**SECTION OF ROADWAY**

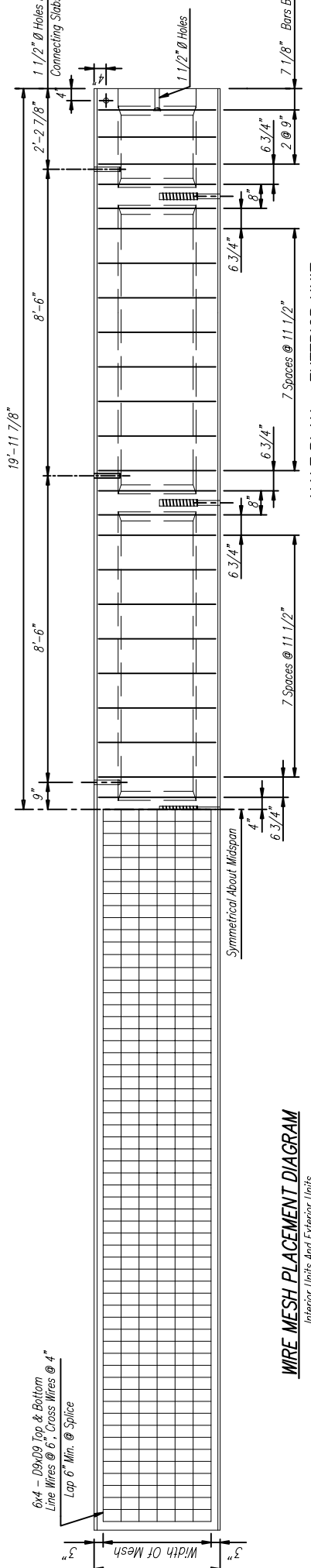
**SECTION A-A**

**BARRIER ANCHOR DETAIL**



**HALF PLAN - INTERIOR UNIT**

**HALF PLAN - EXTERIOR UNIT**

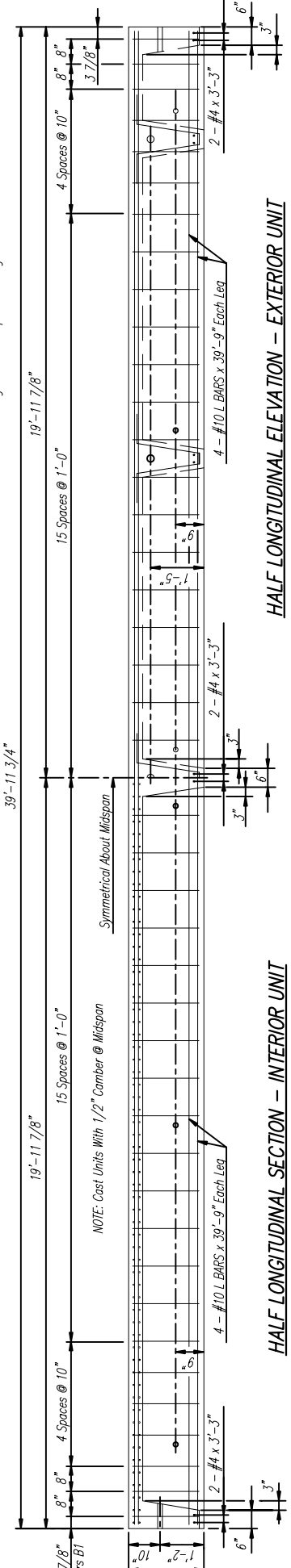


**WIRE MESH PLACEMENT DIAGRAM**

Interior Units And Exterior Units

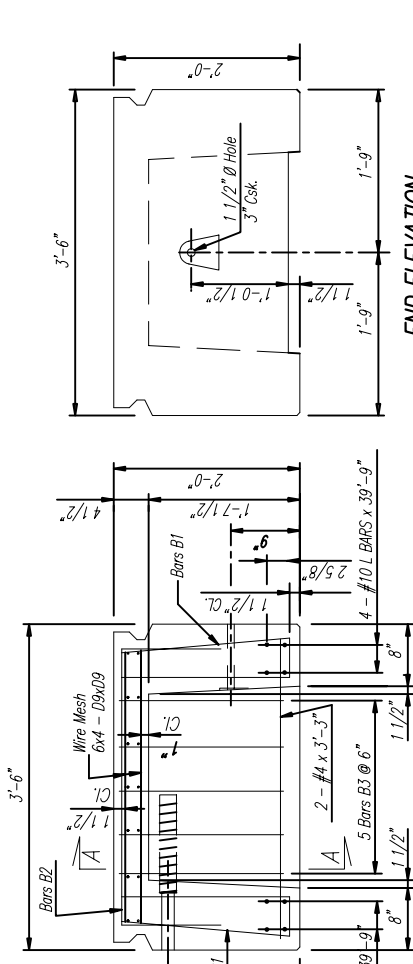
**HALF PLAN - EXTERIOR UNIT**

Showing Additional Top Reinforcing Steel



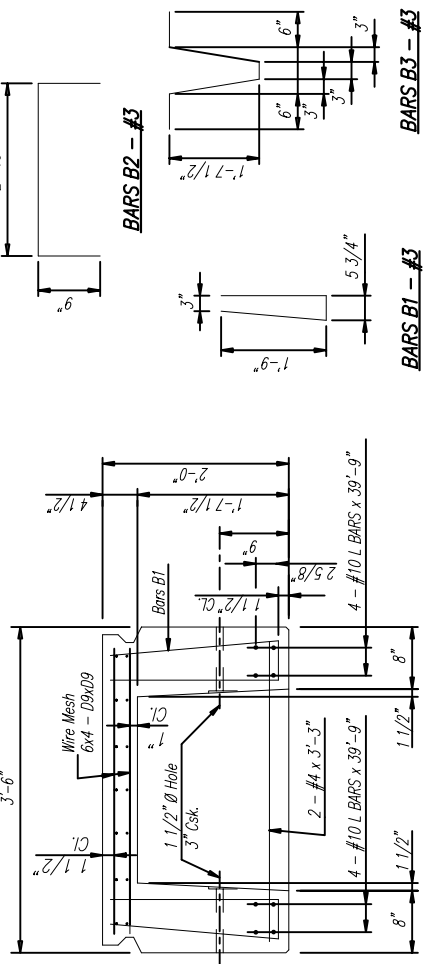
**HALF LONGITUDINAL SECTION - INTERIOR UNIT**

**HALF LONGITUDINAL ELEVATION - EXTERIOR UNIT**



**END ELEVATION**

**EXTERIOR TYPE 2C SECTION**



**INTERIOR TYPE 1 SECTION**

**BAR BENDING DETAILS**

Dimensions Are Out To Out

**GENERAL NOTES:**

AASHTO STANDARD SPECIFICATIONS FOR HIGHWAY BRIDGES  
AASHTO STANDARD SPECIFICATIONS FOR TRANSPORTATION MATERIALS  
AMERICAN SOCIETY FOR TESTING AND MATERIALS  
AMERICAN INSTITUTE OF STEEL CONSTRUCTION

REINFORCING STEEL: ALL REINFORCING STEEL SHALL BE GRADE 60 BILLET STEEL MEETING THE REQUIREMENTS OF AASHTO M31 OR ASTM A615. ALL REINFORCING STEEL SHALL BE ACCURATELY LOCATED IN THE FORMS AND PROPER CLEARANCES MAINTAINED WITH STAINLESS STEEL OR RUBBER TIPPED CHAIRS. REINFORCING DIMENSIONS ARE CENTER TO CENTER UNLESS OTHERWISE NOTED ON PLANS.

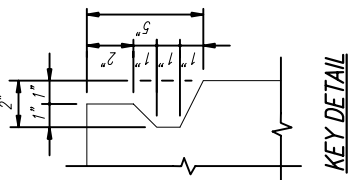
WELDED WIRE FABRIC SHALL CONFORM TO THE REQUIREMENTS OF AASHTO M221 OR M225. EXPANSION JOINTS: JOINT FILLER TO BE AASHTO M-213 OR EQUAL.

CONCRETE: CONCRETE SHALL CONFORM TO AASHTO CLASS AE. MINIMUM 28 DAY COMPRESSIVE STRENGTH SHALL BE 4500 PSI.

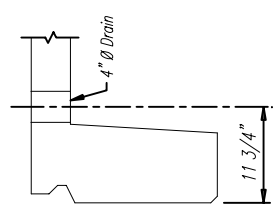
HARDWARE: ALL BOLTS SHALL CONFORM TO ASTM A-307 AND BE GALVANIZED IN ACCORDANCE WITH ASTM-A153

**DESIGN DATA:**

Specifications: A.A.S.H.T.O., 1982 And Interm.  
Design Loading: HS 20-44  
f<sub>c</sub> = 24,000 p.s.i.; f<sub>m</sub> = 30,000 p.s.i.; f<sub>s</sub> = 1,800 p.s.i.; n = 8



**KEY DETAIL**



**SECTION AT DRAIN**

**CONECUH BRIDGE & ENGINEERING, LLC**  
P. O. Box 129  
Troy, Alabama 36081  
334-566-7422

249 County Rd. 2227  
Troy, Alabama 36079  
334-566-7422

PRECAST CONCRETE BRIDGE SLABS - 40' SPANS  
28' CLEAR ROADWAY  
HS 20-44 LOADING

DATE: 7/24/03  
STANDARD DWG. NO. PC-40  
SHEET NO. OF