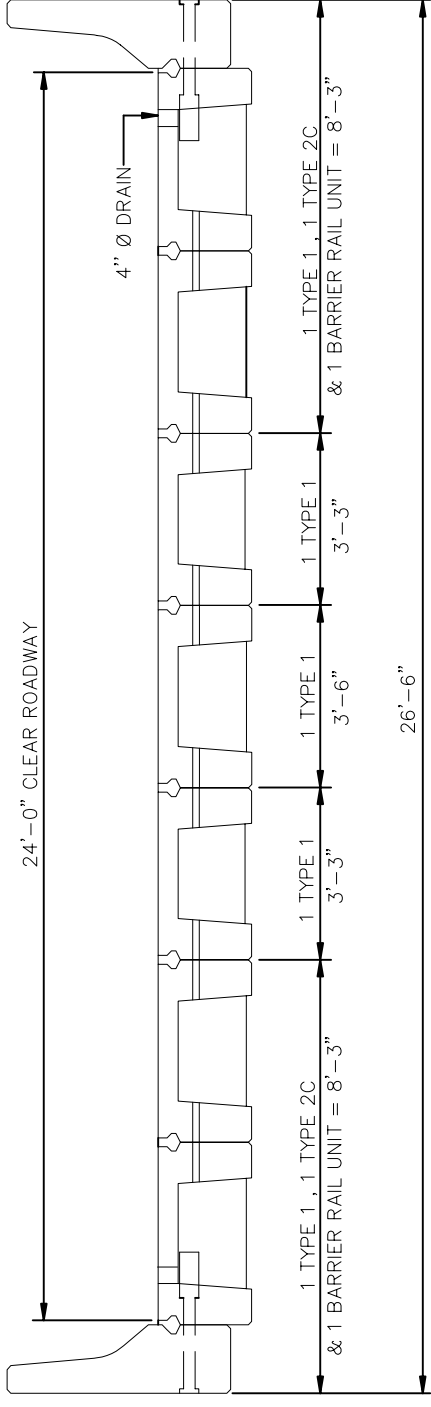
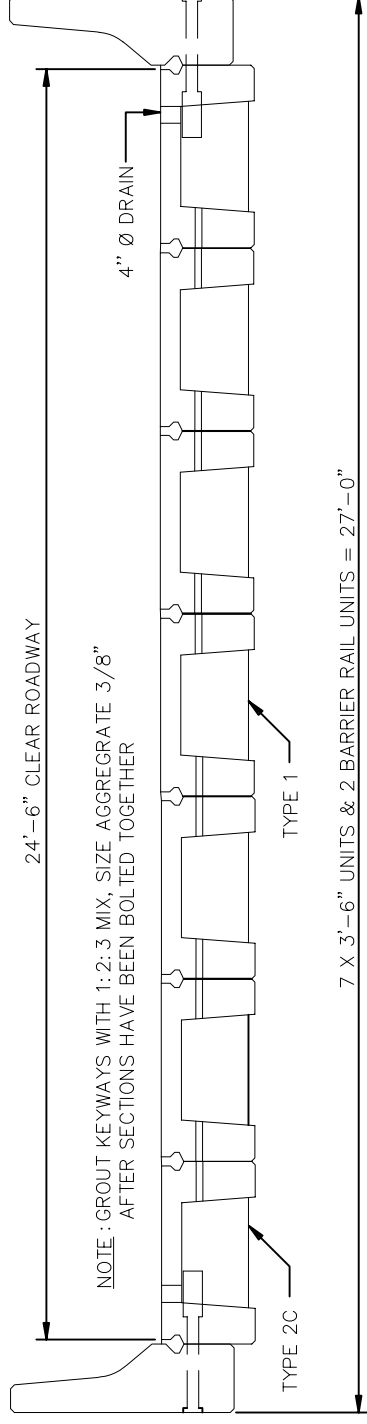


8 X 3'-6" & 2 BARRIER RAIL UNITS = 30'-6"



26'-6"



7 X 3'-6" UNITS & 2 BARRIER RAIL UNITS = 27'-0"

OPTIONAL ROADWAY

TYPICAL SECTIONS

GENERAL NOTES:

**SPECIFICATIONS:**  
 AASHTO STANDARD SPECIFICATIONS FOR HIGHWAY BRIDGES  
 AASHTO STANDARD SPECIFICATIONS FOR TRANSPORTATION MATERIALS  
 AMERICAN SOCIETY FOR TESTING AND MATERIALS  
 AMERICAN INSTITUTE OF STEEL CONSTRUCTION

**REINFORCING STEEL:** ALL REINFORCING STEEL SHALL BE GRADE 60 BILLET STEEL MEETING THE REQUIREMENTS OF AASHTO M31 OR ASTM A615. ALL REINFORCING STEEL SHALL BE ACCURATELY LOCATED IN THE FORMS AND PROPER CLEARANCES MAINTAINED WITH STAINLESS STEEL OR RUBBER TIPPED CHAIRS. REINFORCING DIMENSIONS ARE CENTER TO CENTER UNLESS OTHERWISE NOTED ON PLANS.

**WELDED WIRE FABRIC** SHALL CONFORM TO THE REQUIREMENTS OF AASHTO M221 OR M225.

**EXPANSION JOINTS:** JOINT FILLER TO BE AASHTO M-213 OR EQUAL.

**CONCRETE:** CONCRETE SHALL CONFORM TO AASHTO CLASS AE. MINIMUM 28 DAY COMPRESSIVE STRENGTH SHALL BE 5000 PSI.

**HARDWARE:** ALL BOLTS SHALL CONFORM TO ASTM A-307 AND BE GALVANIZED IN ACCORDANCE WITH ASTM-A153

**DESIGN DATA:**

Specifications: .....A.A.S.H.T.O., 1992 And Interims.

Design Loading: .....HS 20-44

$f_s = 24,000$  p.s.i.;  $f_m = 30,000$  p.s.i.;  $f_c = 1,800$  p.s.i.;  $n = 8$

NOTE: Any roadway width is available with the following stipulations:

- 1) Minimum 7' width
- 2) Any multiple of 3'-3" or 3"-6" added to the minimum 7' width.

**CBE CONECUH BRIDGE & ENGINEERING, LLC**

P. O. Box 129  
 Troy, Alabama 36081  
 249 County Rd. 2227  
 Troy, Alabama 36079  
 334-566-7422

PRECAST CONCRETE BRIDGE SLABS – 34' SPANS  
 24', 24'-6" & 28' ROADWAYS  
 HS 20-44 LOADING

DATE: 7/18/03

STANDARD DWG. NO.  
 PC-34-2  
 SHEET NO. 2 OF 2